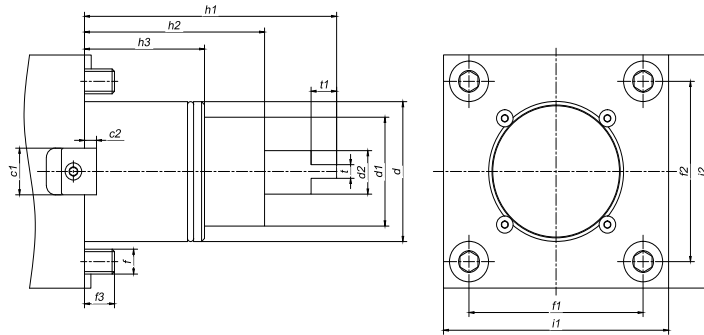


TOOL HOLDERS

BMT

BMT Taper Standard

BMT 锥柄标准

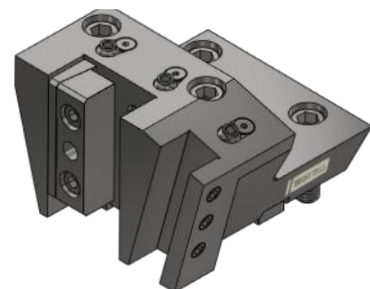
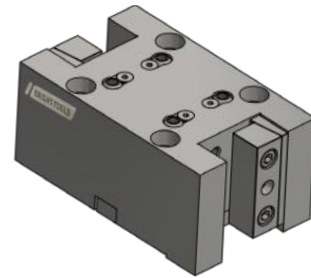


Type	c1	c2	d	d1	d2	f	f1	f2	f3	h1	h2	h3	i1	i2	t	t1
BMT45	15	4	45	35	14	M8	58	58	10	84	60	40	75	75	6	8.5
BMT55	15	4	55	40	16	M10	64	64	14	104	75	30	85	85	8	8.5
BMT65	18	5	65	45	18	M12	70	73	15	112	83	32	94	94	10	14
BMT75	25	5	75	55	23	M12	90	90	15	110	80	43	112	112	14	15
BMT85	25	5	85	65	33.5	M12	100	100	18	140	100	43	125	125	16	20

BMT TOOLING SYSTEM

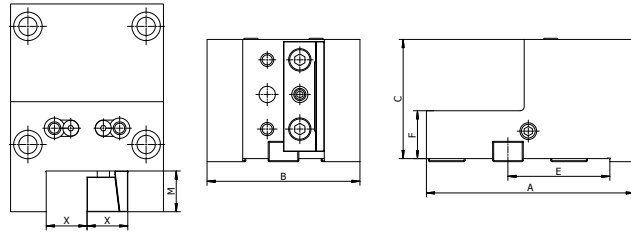
BMT 工具系统

BMT Turning Tool Holder, External Coolant.....	004
BMT 外径刀座, 外出水	004
BMT Turning Tool Holder, Double Side, External Coolant.....	005
BMT 外径双刀座, 外出水	005
BMT Turning Tool Holder, External Coolant.....	006
BMT 外径刀座, 外出水	006
BMT Turning Tool Holder, External Coolant.....	007
BMT 外径双刀座, 外出水	007
BMT Facing Tool Holder.....	008
BMT 端面刀座, 外部出水	008
BMT Boring Bar Holder, External Coolant.....	009
BMT 内孔刀座, 外出水	009
BMT Boring Bar Holder, Internal Coolant.....	010
BMT 内孔刀座, 内出水	010
BMT Boring Bar Holder, Internal and External Coolant.....	011
BMT 内孔刀座, 内出水 + 外出水	011
BMT Boring Bar Holder, External Coolant.....	012
BMT 内孔刀座, 外出水	012
BMT Boring Bar Holder, Internal Coolant.....	013
BMT 内孔刀座, 内出水	013
BMT Boring Bar Holder, Internal and External Coolant.....	014
BMT 内孔刀座, 内出水 + 外出水	014



BMT OD Turning Tool Holder

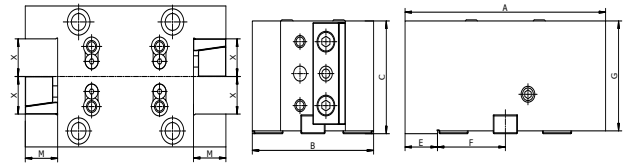
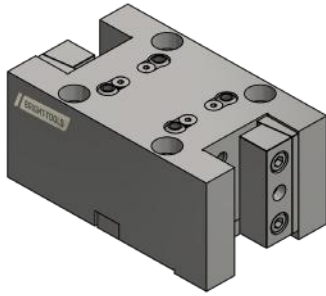
BMT 外径刀座, 外出水



Size	X	A	B	C	E	F	M
BMT45MOD-20-H60	20	105	75	60	-	30	20
BMT65MOD-25-H75	25	131	97	75	55.2	30	25
BMT75MOD-25-H100	25	145.5	112	100	-	30	25
BMT75MOD-32-H85	32	153	120	85	-	35	32
BMT75MOD-32-H100	32	153	120	100	-	35	32
BMT85MOD-32-H75	32	174	124	75	75.5	40	32
BMT85MOD-32-H90	32	168.5	124	90	-	35	32
BMT85MOD-32-H120	32	168.5	124	120	-	50	32

Size	X	A	B	C	E	F	M
BMT45MOD-0.75"-H2.36"	0.75"	4.13"	2.95"	2.36"	-	1.18"	0.75"
BMT65MOD-1"-H2.95"	1"	5.16"	3.82"	2.95"	1.02"	1.18"	1"
BMT75MOD-1"-H3.94"	1"	5.73"	4.41"	3.94"	-	1.18"	1"
BMT75MOD-1.25"-H3.35"	1.25"	6.02"	4.72"	3.35"	-	1.38"	1.25"
BMT75MOD-1.25"-H3.94"	1.25"	6.02"	4.72"	3.94"	-	1.38"	1.25"
BMT85MOD-1.25"-H2.95"	1.25"	6.77"	4.88"	2.95"	-	1.57"	1.25"
BMT85MOD-1.25"-H3.54"	1.25"	6.63"	4.88"	3.54"	2.97"	1.38"	1.25"
BMT85MOD-1.25"-H4.72"	1.25"	6.63"	4.88"	4.72"	-	1.97"	1.25"

BMT Double OD Turning Tool Block BMT 外径双刀座, 外出水

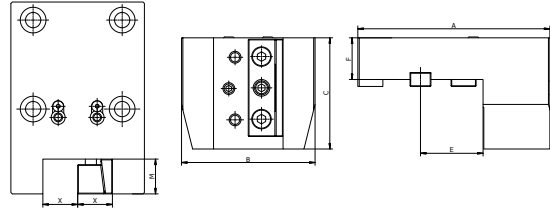
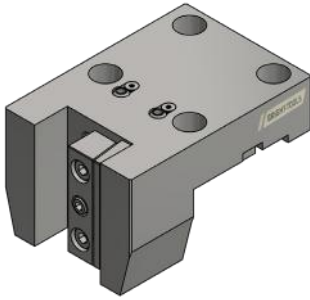


Size	X	A	B	C	E	F	G	M
BMT65MOD-25-H80	25	157	97	80	25.9	55.1	75	25

Size	X	A	B	C	E	F	G	M
BMT65MOD-1"-H3.15"	1"	6.18"	3.82"	3.15"	1.02"	2.17"	2.95"	1"

BMT Face Turning Tool Holder

BMT 外径刀座, 外出水

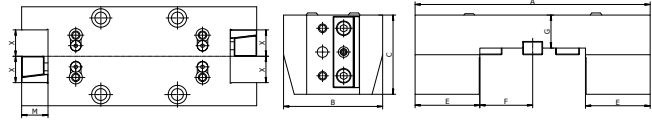
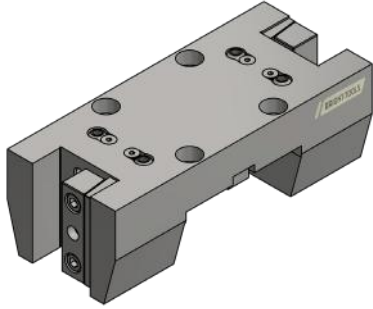


Size	X	A	B	C	E	F	M
BMT55MOD-20-H70	20	134	86	70	50.2	30	20
BMT55MOD-25-H80-E50.2	25	138	90	80	50.2	30	25
BMT55MOD-25-H80-E45.2	25	135	90	80	45.2	30	25
BMT65MOD-25-H80-E50.5	25	141	97	80	50.5	40	25
BMT65MOD-25-H80-E55	25	146	97	80	55	40	25

Size	X	A	B	C	E	F	M
BMT55MOD-1"-H3.15"-E1.97"	1"	5.43"	3.54"	3.15"	1.97"	1.18"	1"
BMT55MOD-1"-H3.15"-E1.77"	1"	5.32"	3.54"	3.15"	1.77"	1.18"	1"
BMT65MOD-1"-H3.15"-E1.99"	1"	5.55"	3.82"	3.15"	1.99"	1.58"	1"

BMT Boring Bar Tool Holders

BMT 外径双刀座, 外出水

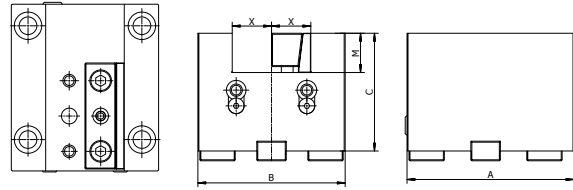
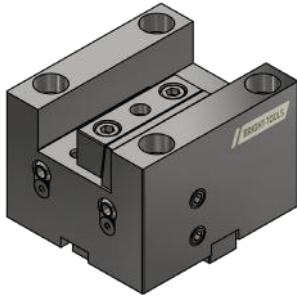


Size	X	A	B	C	E	F	G	M
BMT55MOD-25T-H80-E50.2	25	188	90	80	44	50.2	30	25
BMT55MOD-25T-H80-E45.2	25	178	90	80	44	45.2	30	25

Size	X	A	B	C	E	F	G	M
BMT55MOD-1"T-H3.14"-E1.78"	1"	7.0"	3.54"	3.14"	1.78"	1.73"	1.18"	1"

BMT Facing Tool Holder

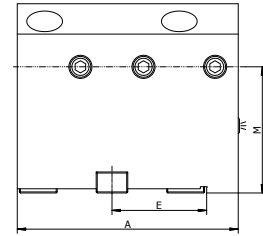
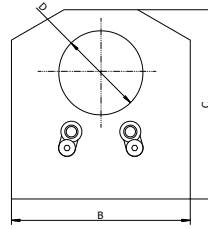
BMT 端面刀座, 外部出水



Size	X	A	B	C	M
BMT45F-20-H80	20	86	75	80	20
BMT55F-20-H70	20	95	86	70	20
BMT55F-25-H60	25	95	92	60	25
BMT65F-25-H82.5	25	100	96	82.5	25
BMT65F-25-H120	25	100	94	120	25
BMT75F-25-H122	25	120	112	122	25
BMT75F-32-H122	32	120	120	122	32
BMT85F-32-H107	32	168.5	124	107	32
BMT85F-32-H138	32	168.5	124	138	32

Size	X	A	B	C	M
BMT45F-0.75"-H3.15"	0.75"	3.39"	2.95"	3.15"	0.75"
BMT55F-1"-H2.36"	1"	3.74"	3.62"	2.36"	1"
BMT65F-1"-H3.25"	1"	3.94"	3.78"	3.25"	1"
BMT65F-1"-H4.72"	1"	3.94"	3.70"	4.72"	1"
BMT75F-1"-H4.80"	1"	4.72"	4.41"	4.80"	1"
BMT75F-1.25"-H4.80"	1.25"	4.72"	4.72"	4.80"	1.25"
BMT85F-1.25"-H4.21"	1.25"	6.63"	4.88"	4.21"	1.25"
BMT85F-1.25"-H5.43"	1.25"	6.63"	4.88"	5.43"	1.25"

BMT Boring Bar Holder, External Coolant BMT 内孔刀座, 外出水

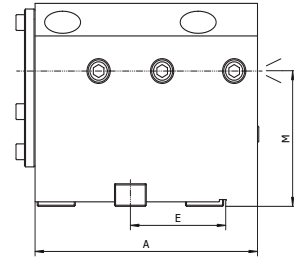
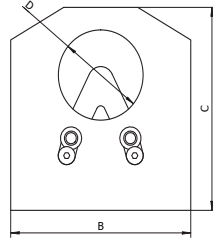


Size	D	A	B	C	E	M
BMT45MID-25-NH65	25	95	75	88	-	65
BMT55MID-32-NH60	32	105	86	90	-	60
BMT55MID-40-NH60	40	105	86	90	-	60
BMT55MID-32-NH70	32	105	86	100	-	70
BMT55MID-40-NH70	40	105	86	100	-	70
					55	
BMT65MID-32-NH72	32	126	95	112		72
BMT65MID-40-NH72	40	126	95	112	55	72
BMT65MID-40-NH85	40	126	95	120	55	85
BMT65MID-40-NH100	40	126	95	140	55	100
BMT65MID-40-NH105	40	126	95	145	55	105
BMT65MID-40-NH115	40	126	95	155	55	115
BMT65MID-50-NH72	50	126	95	116	55	72
BMT65MID-50-NH90	50	126	95	132	55	90
BMT65MID-50-NH100	50	126	95	144	55	100

Size	D	A	B	C	E	M
BMT45MID-1"-NH2.56"	1"	3.74"	2.95"	3.46"	-	2.56"
BMT55MID-1.25"-NH2.36"	1.25"	4.13"	3.62"	3.54"	-	2.36"
BMT55MID-1.5"-NH2.36"	1.5"	4.13"	3.62"	3.54"	-	2.36"
BMT65MID-1.25"-NH2.83"	1.25"	4.96"	3.74"	4.41"	2.165"	2.83"
BMT65MID-1.5"-NH2.83"	1.5"	4.96"	3.74"	4.41"	2.165"	2.83"
BMT65MID-1.5"-NH3.35"	1.5"	4.96"	3.74"	4.72"	2.165"	3.35"
BMT65MID-1.5"-NH3.94"	1.5"	4.96"	3.74"	5.51"	2.165"	3.94"
BMT65MID-2"-NH2.83"	2"	4.96"	3.74"	4.57"	2.165"	2.83"
BMT65MID-2"-NH3.54"	2"	4.96"	3.74"	5.2"	2.165"	3.54"

BMT Boring Bar Holder, Internal Coolant

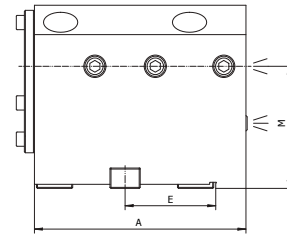
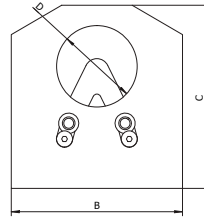
BMT 内孔刀座, 内出水



Size	D	A	B	C	E	M
BMT45MID-25-NH65	25	95	75	88	-	65
BMT55MID-32-NH60	32	105	92	90	-	60
BMT55MID-40-NH60	40	105	92	90	-	60
BMT55MID-32-NH70	32	105	86	100	-	70
BMT55MID-40-NH70	40	105	86	100	-	70
BMT65MID-32-NH72	32	126	95	112	55	72
BMT65MID-40-NH72	40	126	95	112	55	72
BMT65MID-40-NH85	40	126	95	120	55	85
BMT65MID-40-NH100	40	126	95	140	55	100
BMT65MID-40-NH105	40	126	95	145	55	105
BMT65MID-40-NH115	40	126	95	155	55	115
BMT65MID-50-NH72	50	126	95	116	55	72
BMT65MID-50-NH90	50	126	95	132	55	90
BMT65MID-50-NH100	50	126	95	144	55	100

Size	D	A	B	C	E	M
BMT45MID-1"-NH2.56"	1"	3.74"	2.95"	3.46"	-	2.56"
BMT55MID-1.25"-NH2.36"	1.25"	4.13"	3.62"	3.54"	-	2.36"
BMT55MID-1.5"-NH2.36"	1.5"	4.13"	3.62"	3.54"	-	2.36"
BMT65MID-1.25"-NH2.83"	1.25"	4.96"	3.74"	4.41"	2.165"	2.83"
BMT65MID-1.5"-NH2.83"	1.5"	4.96"	3.74"	4.41"	2.165"	2.83"
BMT65MID-1.5"-NH3.35"	1.5"	4.96"	3.74"	4.72"	2.165"	3.35"
BMT65MID-1.5"-NH3.94"	1.5"	4.96"	3.74"	5.51"	2.165"	3.94"
BMT65MID-2"-NH2.83"	2"	4.96"	3.74"	4.57"	2.165"	2.83"
BMT65MID-2"-NH3.54"	2"	4.96"	3.74"	5.2"	2.165"	3.54"

BMT Boring Bar Holder, Internal and External Coolant BMT 内孔刀座, 内出水 + 外出水

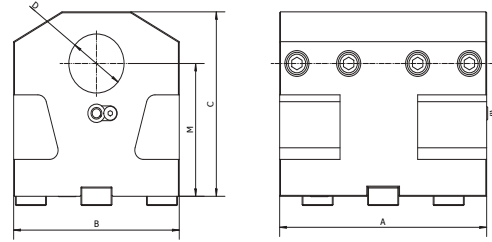
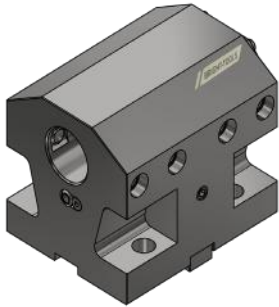


Size	D	A	B	C	E	M
BMT45MID-25-NH65	25	95	75	88	-	65
BMT55MID-32-NH60	32	105	92	90	-	60
BMT55MID-40-NH60	40	105	92	90	-	60
BMT55MID-32-NH70	32	105	86	100	-	70
BMT55MID-40-NH70	40	105	86	100	-	70
BMT65MID-32-NH72	32	126	95	112	55	72
BMT65MID-40-NH72	40	126	95	112	55	72
BMT65MID-40-NH85	40	126	95	120	55	85
BMT65MID-40-NH100	40	126	95	140	55	100
BMT65MID-40-NH105	40	126	95	145	55	105
BMT65MID-40-NH115	40	126	95	155	55	115
BMT65MID-50-NH72	50	126	95	116	55	72
BMT65MID-50-NH90	50	126	95	132	55	90
BMT65MID-50-NH100	50	126	95	144	55	100

Size	D	A	B	C	E	M
BMT45MID-1"-NH2.56"	1"	3.74"	2.95"	3.46"	-	2.56"
BMT55MID-1.25"-NH2.36"	1.25"	4.13"	3.62"	3.54"	-	2.36"
BMT55MID-1.5"-NH2.36"	1.5"	4.13"	3.62"	3.54"	-	2.36"
BMT65MID-1.25"-NH2.83"	1.25"	4.96"	3.74"	4.41"	2.165"	2.83"
BMT65MID-1.5"-NH2.83"	1.5"	4.96"	3.74"	4.41"	2.165"	2.83"
BMT65MID-1.5"-NH3.35"	1.5"	4.96"	3.74"	4.72"	2.165"	3.35"
BMT65MID-1.5"-NH3.94"	1.5"	4.96"	3.74"	5.51"	2.165"	3.94"
BMT65MID-2"-NH2.83"	2"	4.96"	3.74"	4.57"	2.165"	2.83"
BMT65MID-2"-NH3.54"	2"	4.96"	3.74"	5.2"	2.165"	3.54"

BMT Boring Bar Holder, External Coolant

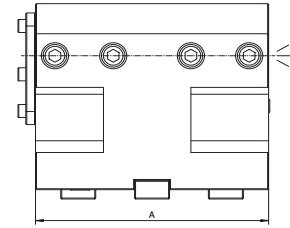
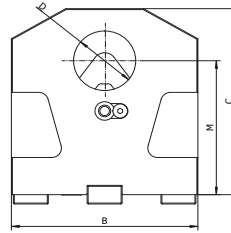
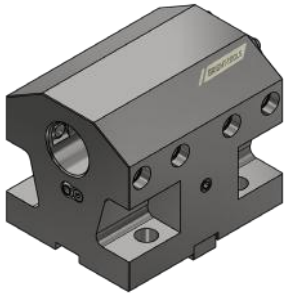
BMT



Size	D	A	B	C	M
BMT75MID-50-NH90	50	120	112	130	90
BMT75MID-50-NH110	50	120	112	151	110
BMT75MID-50-NH125	50	120	112	166	125
BMT75MID-60-NH90	60	120	112	137	90
BMT75MID-60-NH110	60	120	112	160	110
BMT75MID-60-NH125	60	120	112	172	125
BMT85MID-50-NH110	50	161.5	124	157	110
BMT85MID-60-NH110	60	161.5	124	157	110
BMT85MID-80-NH110	80	161.5	130	162	110
BMT85MID-80-NH115	80	161.5	130	170	115

Size	D	A	B	C	M
BMT75MID-2"-NH3.54"	2"	4.72"	4.41"	5.12"	3.54"
BMT75MID-2"-NH4.33"	2"	4.72"	4.41"	5.94"	4.33"
BMT75MID-2"-NH4.92"	2"	4.72"	4.41"	6.53"	4.92"
BMT75MID-2.5"-NH3.54"	2.5"	4.72"	4.41"	5.39"	3.54"
BMT75MID-2.5"-NH4.33"	2.5"	4.72"	4.41"	6.30"	4.33"
BMT75MID-2.5"-NH4.92"	2.5"	4.72"	4.41"	6.77"	4.92"
BMT85MID-2"-NH4.33"	2"	6.36"	4.88"	6.18"	4.33"
BMT85MID-2.5"-NH4.33"	2.5"	6.36"	4.88"	6.18"	4.33"
BMT85MID-3"-NH4.33"	3"	6.36"	5.12"	6.38"	4.33"
BMT85MID-3"-NH4.53"	3"	6.36"	5.12"	6.69"	4.53"

BMT Boring Bar Holder, Internal Coolant BMT 内孔刀座, 内出水

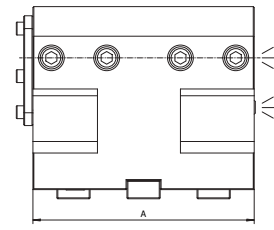
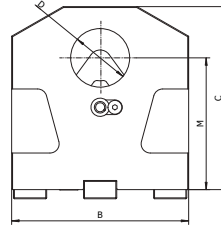
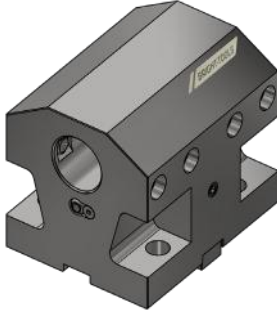


Size	D	A	B	C	M
BMT75MID-50-NH90	50	120	112	130	90
BMT75MID-50-NH110	50	120	112	151	110
BMT75MID-50-NH125	50	120	112	166	125
BMT75MID-60-NH90	60	120	112	137	90
BMT75MID-60-NH110	60	120	112	160	110
BMT75MID-60-NH125	60	120	112	172	125
BMT85MID-50-NH110	50	161.5	124	157	110
BMT85MID-60-NH110	60	161.5	124	157	110
BMT85MID-80-NH110	80	161.5	130	162	110
BMT85MID-80-NH115	80	161.5	130	170	115

Size	D	A	B	C	M
BMT75MID-2"-NH3.54"	2"	4.72"	4.41"	5.12"	3.54"
BMT75MID-2"-NH4.33"	2"	4.72"	4.41"	5.94"	4.33"
BMT75MID-2"-NH4.92"	2"	4.72"	4.41"	6.53"	4.92"
BMT75MID-2.5"-NH3.54"	2.5"	4.72"	4.41"	5.39"	3.54"
BMT75MID-2.5"-NH4.33"	2.5"	4.72"	4.41"	6.30"	4.33"
BMT75MID-2.5"-NH4.92"	2.5"	4.72"	4.41"	6.77"	4.92"
BMT85MID-2"-NH4.33"	2"	6.36"	4.88"	6.18"	4.33"
BMT85MID-2.5"-NH4.33"	2.5"	6.36"	4.88"	6.18"	4.33"
BMT85MID-3"-NH4.33"	3"	6.36"	5.12"	6.38"	4.33"
BMT85MID-3"-NH4.53"	3"	6.36"	5.12"	6.69"	4.53"

BMT Boring Bar Holder, Internal and External Coolant

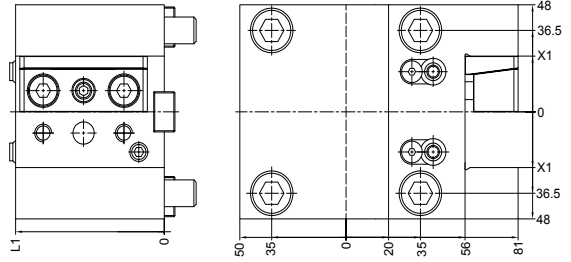
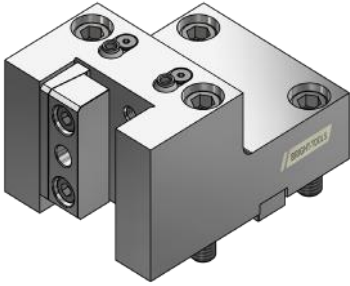
BMT 内孔刀座, 内出水 + 外出水



Size	D	A	B	C	M
BMT75MID-50-NH90	50	120	112	130	90
BMT75MID-50-NH110	50	120	112	151	110
BMT75MID-50-NH125	50	120	112	166	125
BMT75MID-60-NH90	60	120	112	137	90
BMT75MID-60-NH110	60	120	112	160	110
BMT75MID-60-NH125	60	120	112	172	125
BMT85MID-50-NH110	50	161.5	124	157	110
BMT85MID-60-NH110	60	161.5	124	157	110
BMT85MID-80-NH110	80	161.5	130	162	110
BMT85MID-80-NH115	80	161.5	130	170	115

Size	D	A	B	C	M
BMT75MID-2"-NH3.54"	2"	4.72"	4.41"	5.12"	3.54"
BMT75MID-2"-NH4.33"	2"	4.72"	4.41"	5.94"	4.33"
BMT75MID-2"-NH4.92"	2"	4.72"	4.41"	6.53"	4.92"
BMT75MID-2.5"-NH3.54"	2.5"	4.72"	4.41"	5.39"	3.54"
BMT75MID-2.5"-NH4.33"	2.5"	4.72"	4.41"	6.30"	4.33"
BMT75MID-2.5"-NH4.92"	2.5"	4.72"	4.41"	6.77"	4.92"
BMT85MID-2"-NH4.33"	2"	6.36"	4.88"	6.18"	4.33"
BMT85MID-2.5"-NH4.33"	2.5"	6.36"	4.88"	6.18"	4.33"
BMT85MID-3"-NH4.33"	3"	6.36"	5.12"	6.38"	4.33"
BMT85MID-3"-NH4.53"	3"	6.36"	5.12"	6.69"	4.53"

BMT Twin Turn Toolholder, External Coolant
BMT 外径双刀座, 外出水

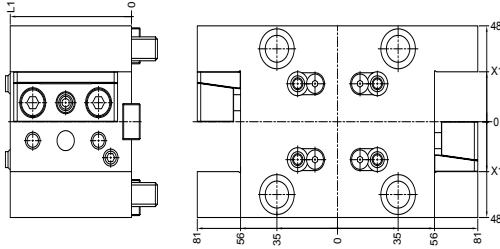
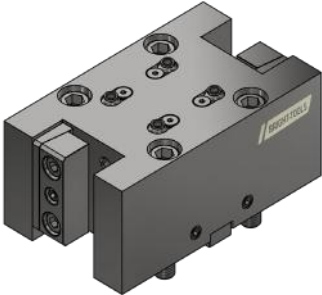


Size	X1	L1
BMT65MOD-25-H70-HASS	25	70

Size	X1	L1
BMT65MOD-1"-H2.76"-HASS	1"	2.76"

BMT Twin Turn Toolholder, External Coolant

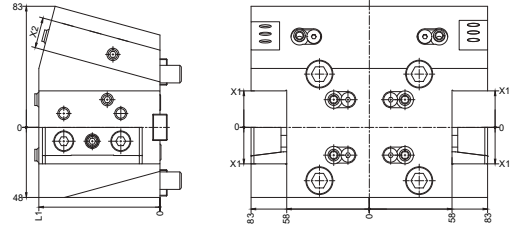
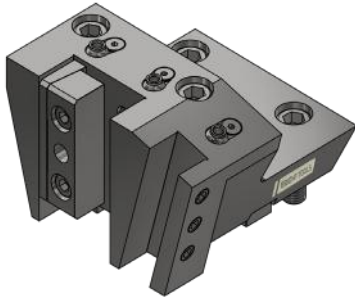
BMT 外径双刀座, 外出水



Size	X1	L1
BMT65MOD-25T-H70-HASS	25	70

Size	X1	L1
BMT65MOD-1"T-H70-HASS	1"	2.76"

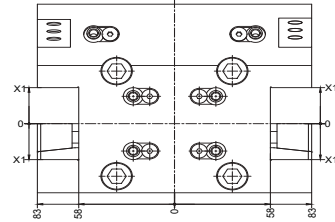
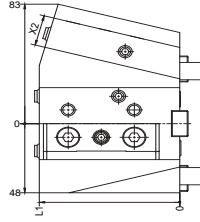
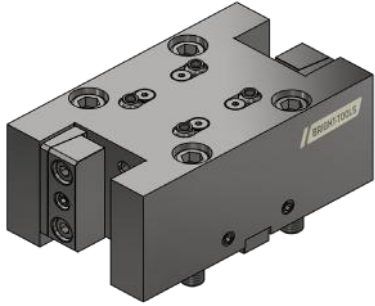
BMT Half-Index Turning Tool Holder, External Coolant
BMT 外径半分度刀座, 外出水



Size	X1	X2	L1
BMT65MOD24-25	25	20	85

Size	X1	X2	L1
BMT65MOD24-1"	1"	0.75"	3.35"

BMT Half-Index Twin Turning Tool Holder, External Coolant
BMT 外径半分度双刀座, 外出水



Size	X1	X2	L1
BMT65MOD24-25T	25	20	85

Size	X1	X2	L1
BMT65MOD24-1"T	1"	0.75"	3.35"