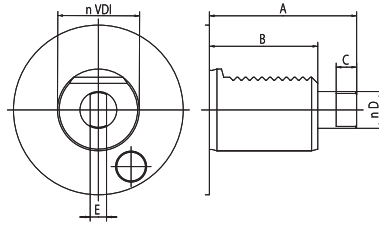
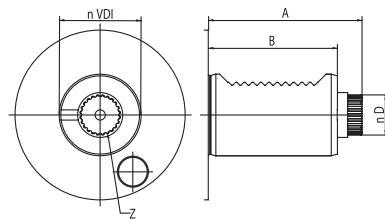


TOOL HOLDERS

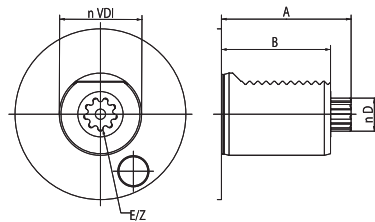
DRIVEN

DIN 1809


| VDI | A | B | C | D | E |
|-----|----|----|----|----|----|
| 30 | 62 | 45 | 8 | 12 | 6 |
| 40 | 72 | 53 | 10 | 18 | 8 |
| 50 | 91 | 78 | 13 | 24 | 13 |

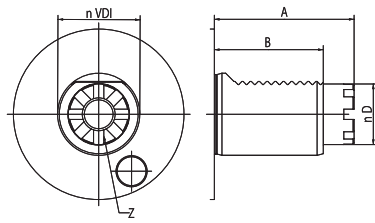
DIN 5480


| VDI | A | B | D | Z |
|-----|----|----|------|----|
| 30 | 67 | 55 | 15.8 | 18 |
| 40 | 75 | 63 | 19.8 | 24 |
| 50 | 93 | 78 | 23.8 | 18 |

DIN 5482


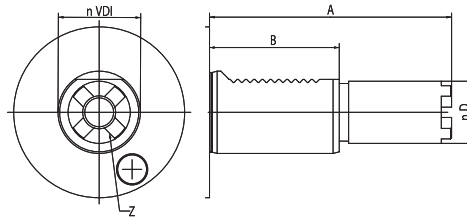
| VDI | A | B | D | E | Z |
|-----|----|----|------|--------|----|
| 30 | 55 | 45 | 14.5 | B15×12 | 8 |
| 40 | 63 | 53 | 16.5 | B17×14 | 9 |
| 50 | 93 | 78 | 19.5 | B20×17 | 11 |

TOEM BARUFFALDI



| VDI | A | B | D | Z |
|-----|----|-------|----|---|
| 30 | 59 | 45/53 | 24 | 6 |
| 40 | 68 | 53 | 32 | 8 |
| 50 | 84 | 70 | 40 | 8 |

HAAS



| VDI | A | B | D | Z | TIPE |
|-----|--------|----|------|---|------|
| 40 | 104.85 | 63 | 30.2 | 4 | 1 |
| 40 | 117.55 | 63 | 30.2 | 4 | 2 |
| 40 | 130.25 | 63 | 30.2 | 4 | 3 |

DRIVEN TOOLING SYSTEM

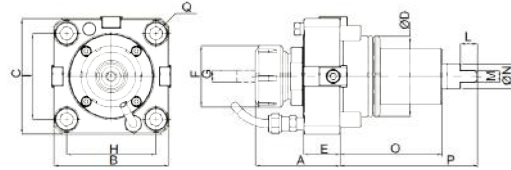
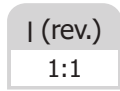
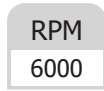
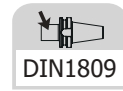
DRIVEN 工具系统

| | |
|--------------------------------------|-----|
| DIN1809 DA DRIVEN HEAD..... | 004 |
| 轴向钻铣动力刀座 | 004 |
| DIN1809 DR DRIVEN HEAD..... | 005 |
| 径向钻铣动力刀座 | 005 |
| DIN1809 DA DRIVEN HEAD | 006 |
| 轴向钻铣动力刀座 | 006 |
| DIN1809 DR DRIVEN HEAD | 007 |
| 径向钻铣动力刀座 | 007 |
| DIN1809 DOA DRIVEN HEAD..... | 008 |
| 轴向偏心钻铣动力刀座 | 008 |
| DIN1809 DOR DRIVEN HEAD..... | 009 |
| 径向偏心钻铣动力刀座 | 009 |
| DIN5480 DA DRIVEN HEAD..... | 010 |
| 轴向钻铣动力刀座 | 010 |
| DIN5480 DR DRIVEN HEAD..... | 011 |
| 径向钻铣动力刀座 | 011 |
| DIN5480 DOA DRIVEN HEAD..... | 012 |
| 轴向偏心钻铣动力刀座 | 012 |
| DIN5480 DOR DRIVEN HEAD | 013 |
| 径向偏心钻铣动力刀座 | 013 |
| DIN5482 DA DRIVEN HEAD..... | 014 |
| 轴向钻铣动力刀座 | 014 |
| DIN5482 DR DRIVEN HEAD | 015 |
| 径向钻铣动力刀座 | 015 |
| DIN5482 DOA DRIVEN HEAD | 016 |
| 轴向偏心钻铣动力刀座 | 016 |
| DIN5482 DOR DRIVEN HEAD | 017 |
| 径向偏心钻铣动力刀座 | 017 |
| TOEM BARUFFALDI DA DRIVEN HEAD..... | 018 |
| 轴向钻铣动力刀座 | 018 |
| TOEM BARUFFALDI DA DRIVEN HEAD..... | 019 |
| 径向钻铣动力刀座 | 019 |
| TOEM BARUFFALDI DA DRIVEN HEAD..... | 020 |
| 轴向偏心钻铣动力刀座 | 020 |
| DTOEM BARUFFALDI DA DRIVEN HEAD..... | 021 |
| 径向偏心钻铣动力刀座 | 021 |
| STEPPED HAASDA DRIVEN HEAD..... | 022 |
| 轴向钻铣动力刀座 | 022 |
| STEPPED HAASDA DRIVEN HEAD..... | 023 |
| 径向钻铣动力刀座 | 023 |
| STEPPED HAAS DOA DRIVEN HEAD..... | 024 |
| 轴向偏心钻铣动力刀座 | 024 |
| STEPPED HAAS DOR DRIVEN HEAD..... | 025 |
| 径向偏心钻铣动力刀座 | 025 |



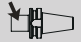
BMT Axial Driven Head, DIN 1809

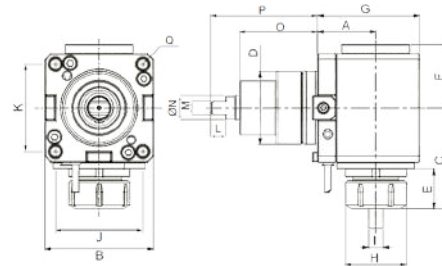
轴向钻铣动力刀座



| Size | A | B | C | D | E | F | G | H | I | L | M | N | O | P | Q |
|-------------------|------|-----|-----|----|----|----|------|-----|-----|----|----|------|----|-------|-----|
| BMT55-DAER25-56.7 | 56.7 | 85 | 85 | 55 | 29 | 42 | ER25 | 64 | 64 | 10 | 8 | 17 | 75 | 103.5 | M10 |
| BMT65-DAER32-68.4 | 68.5 | 94 | 94 | 65 | 30 | 50 | ER32 | 73 | 70 | 14 | 10 | 20 | 81 | 111.5 | M12 |
| BMT75-DAER40-78 | 78 | 112 | 112 | 75 | 30 | 63 | ER40 | 90 | 90 | 15 | 14 | 23 | 80 | 110 | M12 |
| BMT85-DAER50-108 | 108 | 125 | 125 | 85 | 44 | 78 | ER50 | 100 | 100 | 20 | 16 | 27.5 | 96 | 136 | M12 |

BMT Radial Driven Head, DIN 1809
径向钻铣动力刀座

| | | |
|--|-------------|-----------------|
|  DIN1809 | RPM 6000 | I (rev.) 1:1 |
|--|-------------|-----------------|

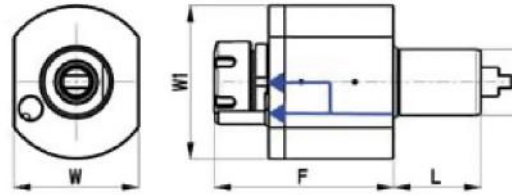


| Size | A | B | C | D | E | F | G | H | I | J | K | L | M | N | O | P | Q |
|------------------|-----|-----|-------|----|------|------|-----|----|------|-----|-----|----|----|------|----|-------|-----|
| BMT55-DRER25-60 | 60 | 85 | 78.5 | 55 | 27.5 | 50 | 86 | 42 | ER25 | 64 | 64 | 10 | 8 | 17 | 75 | 103.5 | M10 |
| BMT55-DRER25-70 | 70 | 85 | 78.5 | 55 | 27.5 | 50 | 86 | 42 | ER25 | 64 | 64 | 10 | 8 | 17 | 75 | 103.5 | M10 |
| BMT55-DRER25-85 | 85 | 85 | 78.5 | 55 | 27.5 | 50 | 86 | 42 | ER25 | 64 | 64 | 10 | 8 | 17 | 75 | 103.5 | M10 |
| BMT65-DRER32-72 | 72 | 94 | 92 | 65 | 36 | 54.5 | 108 | 50 | ER32 | 73 | 70 | 14 | 10 | 20 | 81 | 111.5 | M12 |
| BMT65-DRER32-100 | 100 | 94 | 92 | 65 | 36 | 54.5 | 136 | 50 | ER32 | 73 | 70 | 14 | 10 | 20 | 81 | 111.5 | M12 |
| BMT75-DRER40-60 | 60 | 112 | 104 | 75 | 41 | 65 | 105 | 63 | ER40 | 90 | 90 | 15 | 14 | 23 | 80 | 110 | M12 |
| BMT75-DRER40-90 | 90 | 112 | 104 | 75 | 41 | 65 | 135 | 63 | ER40 | 90 | 90 | 15 | 14 | 23 | 80 | 110 | M12 |
| BMT75-DRER40-125 | 125 | 112 | 104 | 75 | 41 | 65 | 170 | 63 | ER40 | 90 | 90 | 15 | 14 | 23 | 80 | 110 | M12 |
| BMT85-DRER40-110 | 110 | 125 | 134.8 | 85 | 54.3 | 75.5 | 160 | 78 | ER50 | 100 | 100 | 20 | 16 | 27.5 | 96 | 136 | M12 |

VDI Axial Driven Head, DIN 1809

轴向钻铣动力刀座

| | | |
|---------|-------------|-----------------|
| DIN1809 | RPM 6000 | I (rev.) 1:1 |
|---------|-------------|-----------------|

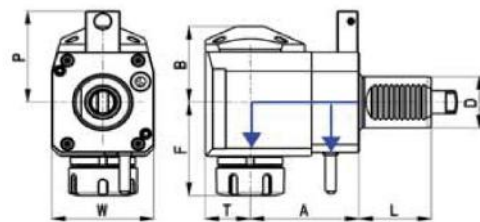


| Size | VDI | Collet | F | L | W | W1 | Nm | Internal Cooling |
|-------------------|-----|--------|-----|----|----|----|----|------------------|
| VDI30-DAER25-87 | 30 | ER25 | 87 | 45 | 64 | 68 | 28 | no |
| VDI30-DAER25K-87 | 30 | ER25 | 87 | 45 | 64 | 68 | 28 | yes |
| VDI40-DAER25-105 | 40 | ER25 | 105 | 53 | 80 | 86 | 50 | no |
| VDI40-DAER25K-105 | 40 | ER25 | 105 | 53 | 80 | 86 | 50 | yes |
| VDI40-DAER32-108 | 40 | ER32 | 108 | 53 | 80 | 86 | 50 | no |
| VDI40-DAER32K-108 | 40 | ER32 | 108 | 53 | 80 | 86 | 50 | yes |
| VDI40-DAER32-95 | 40 | ER32 | 95 | 53 | 80 | 86 | 50 | no |
| VDI40-DAER32K-95 | 40 | ER32 | 95 | 53 | 80 | 86 | 50 | yes |

VDI Radial Driven Head, DIN 1809

径向钻铣动力刀座

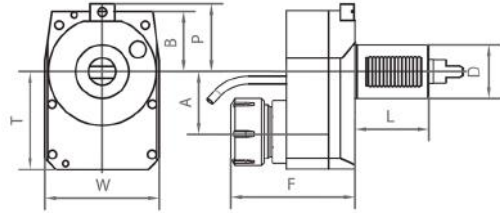
| | | |
|---------|-------------|-----------------|
| DIN1809 | RPM 6000 | I (rev.) 1:1 |
|---------|-------------|-----------------|



| Size | VDI | Collet | A | B | F | L | P | T | W | Nm | Internal Cooling | Direction |
|-------------------|-----|--------|-----|----|----|----|----|----|----|----|------------------|-----------|
| VDI30-DRER25-55 | 30 | ER25 | 55 | 48 | 63 | 45 | 48 | 29 | 64 | 28 | no | right |
| VDI30-DRER25K-55 | 30 | ER25 | 55 | 51 | 63 | 45 | 48 | 29 | 64 | 28 | yes | right |
| VDI40-DRER25-80 | 40 | ER25 | 80 | 59 | 70 | 53 | 71 | 36 | 75 | 50 | no | right |
| VDI40-DRER25K-80 | 40 | ER25 | 80 | 62 | 70 | 53 | 71 | 36 | 75 | 50 | yes | right |
| VDI40-DRER32-80 | 40 | ER32 | 80 | 59 | 74 | 53 | 71 | 36 | 75 | 50 | no | right |
| VDI40-DRER32K-80 | 40 | ER32 | 80 | 62 | 74 | 53 | 71 | 36 | 75 | 50 | yes | right |
| VDI40-DRER25-100 | 40 | ER25 | 100 | 59 | 70 | 53 | - | 36 | 75 | 50 | no | left |
| VDI40-DRER25K-100 | 40 | ER25 | 100 | 62 | 70 | 53 | - | 36 | 75 | 50 | yes | left |
| VDI40-DRER32-100 | 40 | ER32 | 100 | 59 | 74 | 53 | - | 36 | 75 | 50 | no | left |
| VDI40-DRER32K-100 | 40 | ER32 | 100 | 62 | 74 | 53 | - | 36 | 75 | 50 | yes | left |

VDI Axial Driven Head, Offset, DIN 1809
轴向偏心钻铣动力刀座

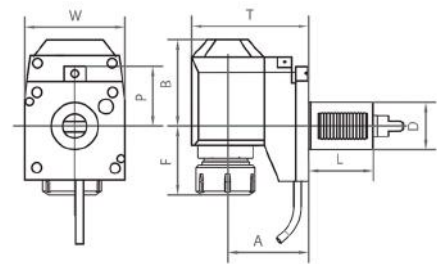
| | | |
|---------|-------|----------|
| | RPM | I (rev.) |
| DIN1809 | 12000 | 1:2 |



| Size | VDI | Collet | A | B | F | L | P | T | W | Nm | Cooling |
|----------------------|-----|--------|----|----|-----|----|----|----|----|----|---------|
| VDI30-DOAER25-50-106 | 30 | ER25 | 50 | 40 | 106 | 45 | 48 | 90 | 78 | 14 | EXT |

VDI Radial Driven Head, Offset, DIN 1809
径向偏心钻铣动力刀座

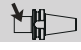
| | |
|---------|----------|
| | I (rev.) |
| DIN1809 | 1:1 |

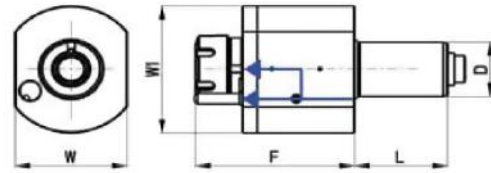


| Size | VDI | Collet | A | B | F | L | P | T | W | Nm | RPM | Cooling |
|-----------------------|-----|--------|-----|----|----|----|----|-----|----|----|------|---------|
| VDI30-DORER25-75-40 | 30 | ER25 | 75 | 71 | 40 | 45 | 48 | 101 | 64 | 28 | 6000 | no |
| VDI30-DORER25K-75-40 | 30 | ER25 | 75 | 74 | 40 | 45 | 48 | 101 | 64 | 28 | 6000 | yes |
| VDI40-DORER25-120-37 | 40 | ER25 | 120 | 92 | 37 | 53 | 71 | 120 | 75 | 60 | 4000 | no |
| VDI40-DORER25K-120-37 | 40 | ER25 | 120 | 95 | 37 | 53 | 71 | 120 | 75 | 60 | 4000 | yes |
| VDI40-DORER32-120-41 | 40 | ER32 | 120 | 92 | 41 | 53 | 71 | 120 | 75 | 60 | 4000 | no |
| VDI40-DORER32K-120-41 | 40 | ER32 | 120 | 95 | 41 | 53 | 71 | 120 | 75 | 60 | 4000 | yes |

VDI Axial Driven Head, DIN 5480

轴向钻铣动力刀座


| | | |
|--|-------------|-----------------|
|  DIN5480 | RPM 6000 | I (rev.) 1:1 |
|--|-------------|-----------------|

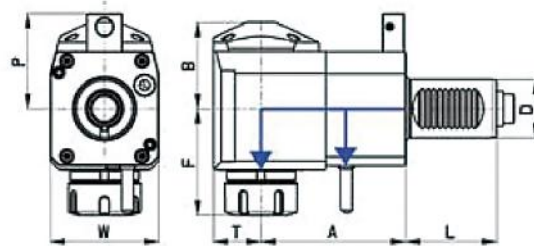


| Size | VDI | Collet | F | L | W | W1 | Nm | Internal Cooling |
|-------------------|-----|--------|-----|----|----|----|----|------------------|
| VDI30-DAER25-87 | 30 | ER25 | 87 | 55 | 62 | 69 | 28 | no |
| VDI30-DAER25K-87 | 30 | ER25 | 87 | 55 | 62 | 69 | 28 | yes |
| VDI40-DAER25-105 | 40 | ER25 | 105 | 63 | 76 | 94 | 50 | no |
| VDI40-DAER25K-105 | 40 | ER25 | 105 | 63 | 76 | 94 | 50 | yes |
| VDI40-DAER32-108 | 40 | ER32 | 108 | 63 | 76 | 94 | 50 | no |
| VDI40-DAER32K-108 | 40 | ER32 | 108 | 63 | 76 | 94 | 50 | yes |

VDI Radial Driven Head, DIN 5480

径向钻铣动力刀座

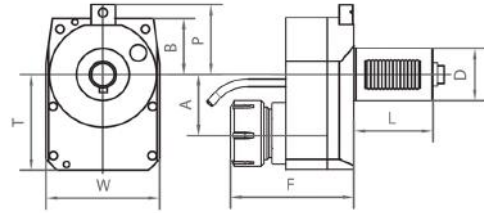
| | | |
|--|-------------|-----------------|
|  DIN5480 | RPM 6000 | I (rev.) 1:1 |
|--|-------------|-----------------|



| Size | VDI | Collet | A | B | F | L | P | T | W | Nm | Internal Cooling | Direction |
|-------------------|-----|--------|-----|----|----|----|----|----|----|----|------------------|-----------|
| VDI30-DRER25-55 | 30 | ER25 | 55 | 48 | 63 | 55 | 56 | 26 | 64 | 28 | no | right |
| VDI30-DRER25K-55 | 30 | ER25 | 55 | 51 | 63 | 55 | 56 | 26 | 64 | 28 | yes | right |
| VDI30-DRER25-85 | 30 | ER25 | 85 | 48 | 63 | 55 | 56 | 26 | 64 | 28 | no | right |
| VDI30-DRER25K-85 | 30 | ER25 | 85 | 51 | 63 | 55 | 56 | 26 | 64 | 28 | yes | right |
| VDI30-DRER25-100 | 30 | ER25 | 100 | 48 | 63 | 55 | 56 | 29 | 64 | 28 | no | right |
| VDI30-DRER25K-100 | 30 | ER25 | 100 | 51 | 63 | 55 | 56 | 29 | 64 | 28 | yes | right |
| VDI40-DRER25-80 | 40 | ER25 | 80 | 59 | 70 | 63 | 65 | 33 | 75 | 50 | no | right |
| VDI40-DRER25K-80 | 40 | ER25 | 80 | 62 | 70 | 63 | 65 | 33 | 75 | 50 | yes | right |
| VDI40-DRER25-100 | 40 | ER25 | 100 | 59 | 70 | 63 | 65 | 33 | 75 | 50 | no | right |
| VDI40-DRER25K-100 | 40 | ER25 | 100 | 62 | 70 | 63 | 65 | 33 | 75 | 50 | yes | right |
| VDI40-DRER32-80 | 40 | ER32 | 80 | 59 | 74 | 63 | 65 | 33 | 75 | 50 | no | right |
| VDI40-DRER32K-80 | 40 | ER32 | 80 | 62 | 74 | 63 | 65 | 33 | 75 | 50 | yes | right |
| VDI40-DRER32-100 | 40 | ER32 | 100 | 59 | 74 | 63 | 65 | 33 | 75 | 50 | no | right |
| VDI40-DRER32K-100 | 40 | ER32 | 100 | 62 | 74 | 63 | 65 | 33 | 75 | 50 | yes | right |

VDI Axial Driven Head, Offset, DIN 5480
轴向偏心钻铣动力刀座

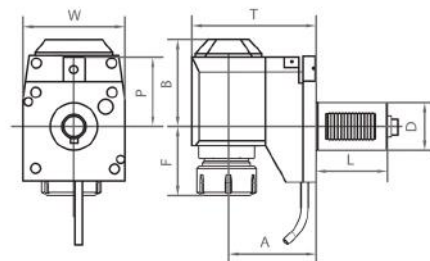
| | | |
|---------|-------|----------|
| | RPM | I (rev.) |
| DIN5480 | 12000 | 1:2 |



| Size | VDI | Collet | A | B | F | L | P | T | W | Nm | Cooling |
|----------------------|-----|--------|----|----|-----|----|----|----|----|----|---------|
| VDI30-DOAER25-50-102 | 30 | ER25 | 50 | 47 | 102 | 55 | 56 | 90 | 78 | 14 | EXT |

VDI Radial Driven Head, Offset, DIN 5480
径向偏心钻铣动力刀座

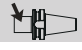
| | | |
|---------|------|----------|
| | RPM | I (rev.) |
| DIN5480 | 6000 | 1:1 |

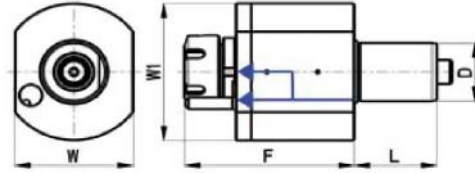


| Size | VDI | Collet | A | B | F | L | P | T | W | Nm | Cooling |
|-------------------------|-----|--------|-----|------|------|----|----|-----|----|----|---------|
| VDI30-DORER25-75-39.8 | 30 | ER25 | 75 | 71 | 39.8 | 55 | 56 | 101 | 64 | 28 | EXT |
| VDI30-DORER25K-75-39.8 | 30 | ER25 | 75 | 73.5 | 39.8 | 55 | 56 | 101 | 64 | 28 | EXT+INT |
| VDI40-DORER25-120-36.6 | 40 | ER25 | 120 | 92.2 | 36.6 | 63 | 65 | 153 | 75 | 50 | EXT |
| VDI40-DORER25K-120-36.6 | 40 | ER25 | 120 | 95.2 | 36.6 | 63 | 65 | 153 | 75 | 50 | EXT+INT |
| VDI40-DORER32-120-40.6 | 40 | ER32 | 120 | 92.2 | 40.6 | 63 | 65 | 153 | 75 | 50 | EXT |
| VDI40-DORER32K-120-40.6 | 40 | ER32 | 120 | 95.2 | 40.6 | 63 | 65 | 153 | 75 | 50 | EXT+INT |

VDI Axial Driven Head, DIN 5482

轴向钻铣动力刀座

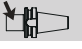
| | | |
|---|------|----------|
|  | RPM | I (rev.) |
| DIN5482 | 6000 | 1:1 |

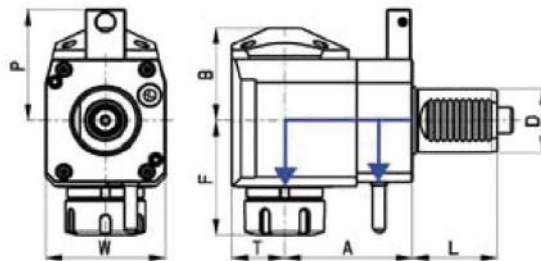


| Size | VDI | Collet | F | L | W | W1 | Nm | Internal Cooling |
|-------------------|-----|--------|-----|----|----|----|----|------------------|
| VDI30-DAER25-87 | 30 | ER25 | 87 | 45 | 62 | 69 | 28 | no |
| VDI30-DAER25K-87 | 30 | ER25 | 87 | 45 | 62 | 69 | 28 | yes |
| VDI40-DAER25-105 | 40 | ER25 | 105 | 53 | 76 | 94 | 50 | no |
| VDI40-DAER25K-105 | 40 | ER25 | 105 | 53 | 76 | 94 | 50 | yes |
| VDI40-DAER32-108 | 40 | ER32 | 108 | 53 | 76 | 94 | 50 | no |
| VDI40-DAER32K-108 | 40 | ER32 | 108 | 53 | 76 | 94 | 50 | yes |

VDI Radial Driven Head, DIN 5482


径向钻铣动力刀座

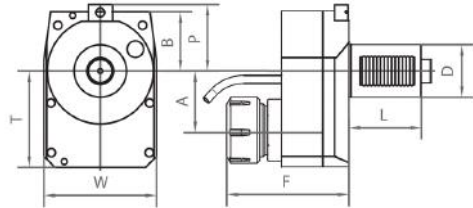
| | | |
|---|------|----------|
|  | RPM | I (rev.) |
| DIN5482 | 6000 | 1:1 |



| Size | VDI | Collet | A | B | F | L | P | T | W | Nm | Internal Cooling | Direction |
|------------------|-----|--------|----|----|----|----|----|----|----|----|------------------|-----------|
| VDI30-DRER25-55 | 30 | ER25 | 55 | 48 | 63 | 45 | 48 | 26 | 64 | 28 | no | right |
| VDI30-DRER25K-55 | 30 | ER25 | 55 | 51 | 63 | 45 | 48 | 26 | 64 | 28 | yes | right |
| VDI40-DRER25-80 | 40 | ER25 | 80 | 59 | 70 | 53 | 71 | 33 | 75 | 50 | no | right |
| VDI40-DRER25K-80 | 40 | ER25 | 80 | 62 | 70 | 53 | 71 | 33 | 75 | 50 | yes | right |
| VDI40-DRER32-80 | 40 | ER32 | 80 | 59 | 74 | 53 | 71 | 33 | 75 | 50 | no | right |
| VDI40-DRER32K-80 | 40 | ER32 | 80 | 62 | 74 | 53 | 71 | 33 | 75 | 50 | yes | right |


VDI Axial Driven Head, Offset, DIN 5482
轴向偏心钻铣动力刀座

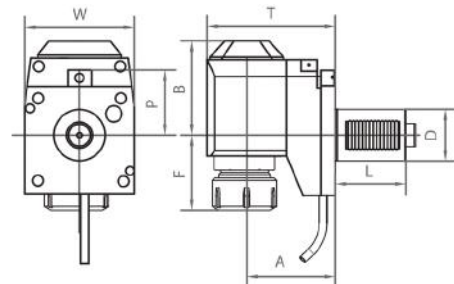
| | | |
|---|-------|----------|
|  | RPM | I (rev.) |
| DIN5482 | 12000 | 1:2 |



| Size | VDI | Collet | A | B | F | L | P | T | W | Nm | Cooling |
|----------------------|-----|--------|----|----|-----|----|----|----|----|----|---------|
| VDI30-DOAER25-50-102 | 30 | ER25 | 50 | 40 | 102 | 45 | 48 | 90 | 78 | 14 | EXT |

VDI Radial Driven Head, Offset, DIN 5482
径向偏心钻铣动力刀座

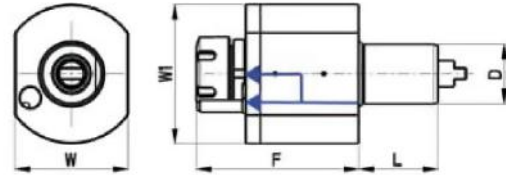
| | |
|---|----------|
|  | I (rev.) |
| DIN 5482 | 1:1 |



| Size | VDI | Collet | A | B | F | L | P | T | W | Nm | RPM | Cooling |
|-----------------------|-----|--------|-----|----|----|----|----|-------|----|----|------|---------|
| VDI30-DORER25-75-40 | 30 | ER25 | 75 | 71 | 40 | 45 | 48 | 101 | 64 | 28 | 6000 | no |
| VDI30-DORER25K-75-40 | 30 | ER25 | 75 | 74 | 40 | 45 | 48 | 101 | 64 | 28 | 6000 | yes |
| VDI40-DORER25-120-37 | 40 | ER25 | 120 | 92 | 37 | 53 | 71 | 125.5 | 75 | 60 | 4000 | no |
| VDI40-DORER25K-120-37 | 40 | ER25 | 120 | 95 | 37 | 53 | 71 | 125.5 | 75 | 60 | 4000 | yes |
| VDI40-DORER32-120-41 | 40 | ER32 | 120 | 92 | 41 | 53 | 71 | 125.5 | 75 | 60 | 4000 | no |
| VDI40-DORER32K-120-41 | 40 | ER32 | 120 | 95 | 41 | 53 | 71 | 125.5 | 75 | 60 | 4000 | yes |

VDI Axial Driven Head, TOEM 轴向钻铣动力刀座

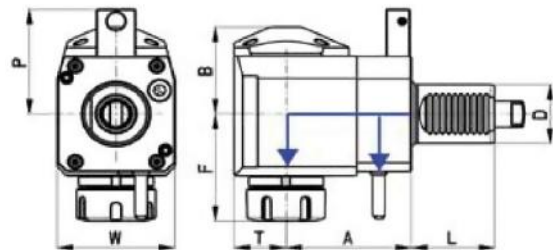
| | | |
|-----------------|------|----------|
| | RPM | I (rev.) |
| TOEM BARUFFALDI | 6000 | 1:1 |



| Size | VDI | Collet | F | L | W | W1 | Nm | Internal Cooling | Z |
|-------------------|-----|--------|-----|----|----|----|----|------------------|---|
| VDI30-DAER25-87 | 30 | ER25 | 87 | 45 | 64 | 68 | 28 | no | 6 |
| VDI30-DAER25K-87 | 30 | ER25 | 87 | 45 | 64 | 68 | 28 | yes | 6 |
| VDI40-DAER25-105 | 40 | ER25 | 105 | 53 | 80 | 86 | 50 | no | 8 |
| VDI40-DAER25K-105 | 40 | ER25 | 105 | 53 | 80 | 86 | 50 | yes | 8 |
| VDI40-DAER32-108 | 40 | ER32 | 108 | 53 | 80 | 86 | 50 | no | 8 |
| VDI40-DAER32K-108 | 40 | ER32 | 108 | 53 | 80 | 86 | 50 | yes | 8 |

VDI Radial Driven Head, TOEM 径向钻铣动力刀座

| | | |
|-----------------|------|----------|
| | RPM | I (rev.) |
| TOEM BARUFFALDI | 6000 | 1:1 |

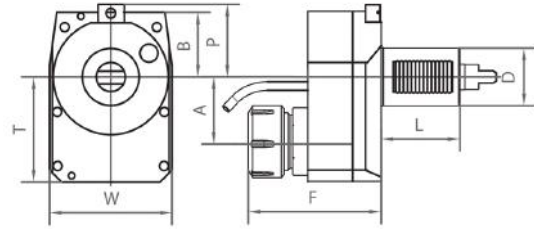


| Size | VDI | Collet | A | B | F | L | P | T | W | Nm | Internal Cooling | Direction | Z |
|------------------|-----|--------|----|----|----|----|----|----|----|----|------------------|-----------|---|
| VDI30-DRER25-55 | 30 | ER25 | 55 | 48 | 63 | 45 | 48 | 29 | 64 | 28 | no | right | 6 |
| VDI30-DRER25K-55 | 30 | ER25 | 55 | 51 | 63 | 45 | 48 | 29 | 64 | 28 | yes | right | 6 |
| VDI40-DRER25-80 | 40 | ER25 | 80 | 59 | 70 | 53 | 71 | 36 | 75 | 50 | no | right | 8 |
| VDI40-DRER25K-80 | 40 | ER25 | 80 | 62 | 70 | 53 | 71 | 36 | 75 | 50 | yes | right | 8 |
| VDI40-DRER32-80 | 40 | ER32 | 80 | 59 | 74 | 53 | 71 | 36 | 75 | 50 | no | right | 8 |
| VDI40-DRER32K-80 | 40 | ER32 | 80 | 62 | 74 | 53 | 71 | 36 | 75 | 50 | yes | right | 8 |

VDI Axial Driven Head, Offset, TOEM
轴向偏心钻铣动力刀座



| | | |
|-----------------|-------|----------|
| | RPM | I (rev.) |
| TOEM BARUFFALDI | 12000 | 1:2 |

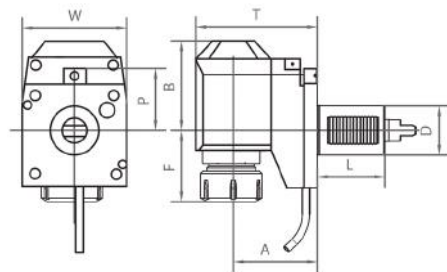


| Size | VDI | Collet | A | B | F | L | P | T | W | Nm | Cooling | Z |
|----------------------|-----|--------|----|----|-----|----|----|----|----|----|---------|---|
| VDI30-DOAER25-50-106 | 30 | ER25 | 50 | 40 | 106 | 45 | 48 | 90 | 78 | 14 | EXT | 6 |

VDI Radial Driven Head, Offset, TOEM
径向偏心钻铣动力刀座

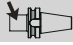


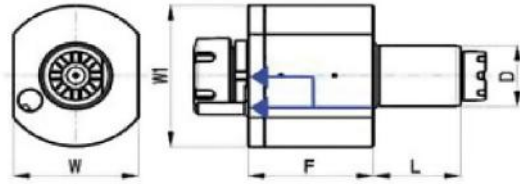
| | | |
|-----------------|------|----------|
| | RPM | I (rev.) |
| TOEM BARUFFALDI | 6000 | |



| Size | VDI | Collet | A | B | F | L | P | T | W | Nm | Cooling | Z |
|-----------------------|-----|--------|-----|----|----|----|----|-----|----|----|---------|---|
| VDI30-DORER25-75-40 | 30 | ER25 | 75 | 71 | 40 | 45 | 48 | 101 | 64 | 28 | no | |
| VDI30-DORER25K-75-40 | 30 | ER25 | 75 | 74 | 40 | 45 | 48 | 101 | 64 | 28 | yes | |
| VDI40-DORER25-120-37 | 40 | ER25 | 120 | 92 | 37 | 53 | 71 | 120 | 75 | 60 | no | |
| VDI40-DORER25K-120-37 | 40 | ER25 | 120 | 95 | 37 | 53 | 71 | 120 | 75 | 60 | yes | 6 |
| VDI40-DORER32-120-41 | 40 | ER32 | 120 | 92 | 41 | 53 | 71 | 120 | 75 | 60 | no | 6 |
| VDI40-DORER32K-120-41 | 40 | ER32 | 120 | 95 | 41 | 53 | 71 | 120 | 75 | 60 | yes | - |
| | | | | | | | | | | | | - |
| | | | | | | | | | | | | - |
| | | | | | | | | | | | | - |
| | | | | | | | | | | | | - |


VDI Axial Driven Head, STEPPED HAAS
轴向钻铣动力刀座

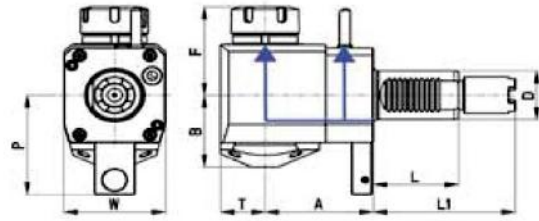
| | | |
|---|------|----------|
|  | RPM | I (rev.) |
| STEPPED HAAS | 6000 | 1:1 |



| Size | VDI | Collet | F | L | L1 | W | W1 | Nm | Internal Cooling |
|---------------------|-----|--------|-----|----|--------|----|----|----|------------------|
| VDI40-DAER25-105 | 40 | ER25 | 105 | 63 | 104.85 | 76 | 94 | 50 | no |
| VDI40-DAER25K-105 | 40 | ER25 | 105 | 63 | 104.85 | 76 | 94 | 50 | yes |
| VDI40-DAER32-108 | 40 | ER32 | 108 | 63 | 104.85 | 76 | 94 | 50 | no |
| VDI40-DAER32K-108 | 40 | ER32 | 108 | 63 | 104.85 | 76 | 94 | 50 | yes |
| VDI40-DAER25-105L | 40 | ER25 | 105 | 63 | 117.55 | 76 | 94 | 50 | no |
| VDI40-DAER25K-105L | 40 | ER25 | 105 | 63 | 117.55 | 76 | 94 | 50 | yes |
| VDI40-DAER32-108L | 40 | ER32 | 108 | 63 | 117.55 | 76 | 94 | 50 | no |
| VDI40-DAER32K-108L | 40 | ER32 | 108 | 63 | 117.55 | 76 | 94 | 50 | yes |
| VDI40-DAER25-105EL | 40 | ER25 | 105 | 63 | 130.25 | 76 | 94 | 50 | no |
| VDI40-DAER25K-105EL | 40 | ER25 | 105 | 63 | 130.25 | 76 | 94 | 50 | yes |
| VDI40-DAER32-108EL | 40 | ER32 | 108 | 63 | 130.25 | 76 | 94 | 50 | no |
| VDI40-DAER32K-108EL | 40 | ER32 | 108 | 63 | 130.25 | 76 | 94 | 50 | yes |

VDI Radial Driven Head, STEPPED HAAS
径向钻铣动力刀座

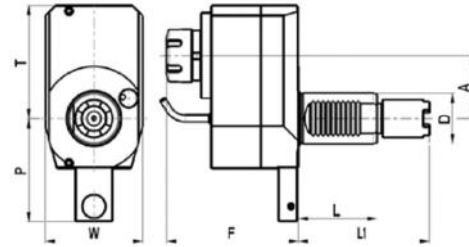
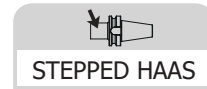
| | | |
|---|------|----------|
|  | RPM | I (rev.) |
| STEPPED HAAS | 6000 | 1:1 |



| Size | VDI | Collet | A | B | F | L | L1 | P | T | W | Nm | Internal Cooling | Direction |
|--------------------|-----|--------|----|----|----|----|--------|----|----|----|----|------------------|-----------|
| VDI40-DRER25-69 | 40 | ER25 | 69 | 59 | 70 | 63 | 104.85 | 82 | 36 | 75 | 60 | no | left |
| VDI40-DRER25K-69 | 40 | ER25 | 69 | 62 | 70 | 63 | 104.85 | 82 | 36 | 75 | 50 | yes | left |
| VDI40-DRER32-69 | 40 | ER32 | 69 | 59 | 74 | 63 | 104.85 | 82 | 36 | 75 | 50 | no | left |
| VDI40-DRER32K-69 | 40 | ER32 | 69 | 62 | 74 | 63 | 104.85 | 82 | 36 | 75 | 50 | yes | left |
| VDI40-DRER25-69L | 40 | ER25 | 69 | 59 | 70 | 63 | 117.55 | 82 | 36 | 75 | 50 | no | left |
| VDI40-DRER25K-69L | 40 | ER25 | 69 | 62 | 70 | 63 | 117.55 | 82 | 36 | 75 | 50 | yes | left |
| VDI40-DRER32-69L | 40 | ER32 | 69 | 59 | 74 | 63 | 117.55 | 82 | 36 | 75 | 50 | no | left |
| VDI40-DRER32K-69L | 40 | ER32 | 69 | 62 | 74 | 63 | 117.55 | 82 | 36 | 75 | 50 | yes | left |
| VDI40-DRER25-69EL | 40 | ER32 | 69 | 59 | 70 | 63 | 130.25 | 82 | 36 | 75 | 50 | no | left |
| VDI40-DRER25K-69EL | 40 | ER25 | 69 | 62 | 70 | 63 | 130.25 | 82 | 36 | 75 | 50 | yes | left |
| VDI40-DRER32-69EL | 40 | ER25 | 69 | 59 | 74 | 63 | 130.25 | 82 | 36 | 75 | 50 | no | left |
| VDI40-DRER32K-69EL | 40 | ER32 | 69 | 62 | 74 | 63 | 130.25 | 82 | 36 | 75 | 50 | yes | left |
| VDI40-DRER25-80 | 40 | ER25 | 80 | 59 | 70 | 63 | 104.85 | 82 | 33 | 75 | 50 | no | left |
| VDI40-DRER25K-80 | 40 | ER25 | 80 | 62 | 70 | 63 | 104.85 | 82 | 33 | 75 | 50 | yes | left |
| VDI40-DRER32-80 | 40 | ER32 | 80 | 59 | 74 | 63 | 104.85 | 82 | 33 | 75 | 50 | no | left |
| VDI40-DRER32K-80 | 40 | ER32 | 80 | 62 | 74 | 63 | 104.85 | 82 | 33 | 75 | 50 | yes | left |
| VDI40-DRER25-80L | 40 | ER25 | 80 | 59 | 70 | 63 | 117.55 | 82 | 33 | 75 | 50 | no | left |
| VDI40-DRER25K-80L | 40 | ER25 | 80 | 62 | 70 | 63 | 117.55 | 82 | 33 | 75 | 50 | yes | left |
| VDI40-DRER32-80L | 40 | ER32 | 80 | 59 | 74 | 63 | 117.55 | 82 | 33 | 75 | 50 | no | left |
| VDI40-DRER32K-80L | 40 | ER32 | 80 | 62 | 74 | 63 | 117.55 | 82 | 33 | 75 | 50 | yes | left |
| VDI40-DRER25-80EL | 40 | ER25 | 80 | 59 | 70 | 63 | 130.25 | 82 | 33 | 75 | 50 | no | left |
| VDI40-DRER25K-80EL | 40 | ER25 | 80 | 62 | 70 | 63 | 130.25 | 82 | 33 | 75 | 50 | yes | left |
| VDI40-DRER32-80EL | 40 | ER32 | 80 | 59 | 74 | 63 | 130.25 | 82 | 33 | 75 | 50 | no | left |
| VDI40-DRER32K-80EL | 40 | ER32 | 80 | 62 | 74 | 63 | 130.25 | 82 | 33 | 75 | 50 | yes | left |

VDI Axial Driven Head, Offset, STEPPED HAAS

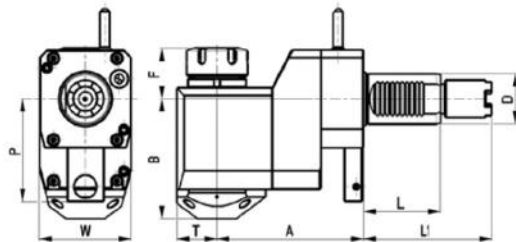
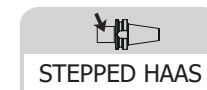
轴向偏心钻铣动力刀座



| Size | VDI | Collet | A | F | L | L1 | P | T | W | Cooling | Direction |
|------------------------|-----|--------|----|-----|----|--------|----|----|----|---------|-----------|
| VDI40-DOAER25-50-63 | 40 | ER25 | 50 | 106 | 63 | 140.85 | 82 | 90 | 78 | no | left |
| VDI40-DOAER25K-50-63 | 40 | ER25 | 50 | 106 | 63 | 140.85 | 82 | 90 | 78 | yes | left |
| VDI40-DOAER25-50-63L | 40 | ER25 | 50 | 106 | 63 | 117.55 | 82 | 90 | 78 | no | left |
| VDI40-DOAER25K-50-63L | 40 | ER25 | 50 | 106 | 63 | 117.55 | 82 | 90 | 78 | yes | left |
| VDI40-DOAER25-50-63EL | 40 | ER25 | 50 | 106 | 63 | 130.25 | 82 | 90 | 78 | no | left |
| VDI40-DOAER25K-50-63EL | 40 | ER25 | 50 | 106 | 63 | 130.25 | 82 | 90 | 78 | yes | left |

VDI Radial Driven Head, Offset, STEPPED HAAS

径向偏心钻铣动力刀座



| Size | VDI | Collet | A | B | F | L | L1 | P | T | W | Cooling | Direction |
|-------------------------|-----|--------|-----|----|----|----|--------|----|----|----|---------|-----------|
| VDI40-DORER25-120-37 | 40 | ER25 | 120 | 92 | 37 | 63 | 104.85 | 82 | 33 | 75 | no | left |
| VDI40-DORER25K-120-37 | 40 | ER25 | 120 | 95 | 37 | 63 | 104.85 | 82 | 33 | 75 | yes | left |
| VDI40-DORER32-120-37 | 40 | ER32 | 120 | 92 | 41 | 63 | 104.85 | 82 | 33 | 75 | no | left |
| VDI40-DORER32K-120-37 | 40 | ER32 | 120 | 95 | 41 | 63 | 104.85 | 82 | 33 | 75 | yes | left |
| VDI40-DORER25-120-37L | 40 | ER25 | 120 | 92 | 37 | 63 | 117.55 | 82 | 33 | 75 | no | left |
| VDI40-DORER25K-120-37L | 40 | ER25 | 120 | 95 | 37 | 63 | 117.55 | 82 | 33 | 75 | yes | left |
| VDI40-DORER32-120-37L | 40 | ER32 | 120 | 92 | 41 | 63 | 117.55 | 82 | 33 | 75 | no | left |
| VDI40-DORER32K-120-37L | 40 | ER32 | 120 | 95 | 41 | 63 | 117.55 | 82 | 33 | 75 | yes | left |
| VDI40-DORER25-120-37EL | 40 | ER25 | 120 | 92 | 37 | 63 | 130.25 | 82 | 33 | 75 | no | left |
| VDI40-DORER25K-120-37EL | 40 | ER25 | 120 | 95 | 37 | 63 | 130.25 | 82 | 33 | 75 | yes | left |
| VDI40-DORER32-120-37EL | 40 | ER32 | 120 | 92 | 41 | 63 | 130.25 | 82 | 33 | 75 | no | left |
| VDI40-DORER32K-120-37EL | 40 | ER32 | 120 | 95 | 41 | 63 | 130.25 | 82 | 33 | 75 | yes | left |