

BRIGHT-TOOLS

BRIGHT-TOOLS

# TOOL HOLDERS DRIVEN

BRIGHT-TOOLS

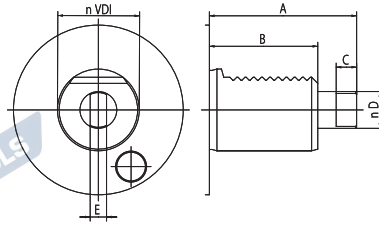
BRIGHT-TOOLS

BRIGHT-TOOLS

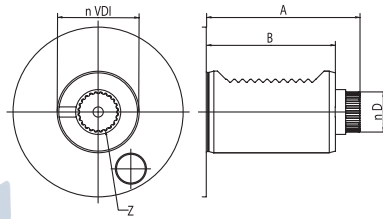
BRIGHT-TOOLS

BRIGHT-TOOLS

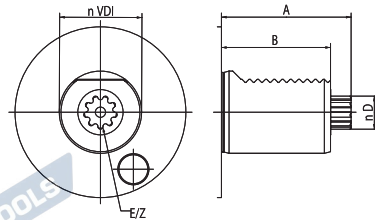
BRIGHT-TOOLS

**DIN 1809**


VDI	A	B	C	D	E
30	62	45	8	12	6
40	72	53	10	18	8
50	91	78	13	24	13

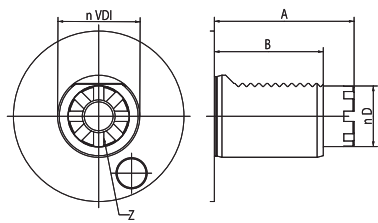
**DIN 5480**


VDI	A	B	D	Z
30	67	55	15.8	18
40	75	63	19.8	24
50	93	78	23.8	18

**DIN 5482**


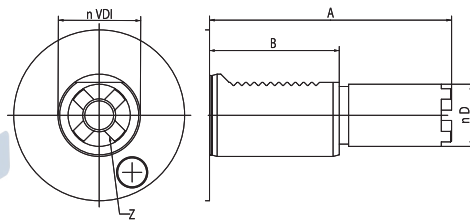
VDI	A	B	D	E	Z
30	55	45	14.5	B15×12	8
40	63	53	16.5	B17×14	9
50	93	78	19.5	B20×17	11

TOEM BARUFFALDI



VDI	A	B	D	Z
30	59	45/53	24	6
40	68	53	32	8
50	84	70	40	8

HAAS



VDI	A	B	D	Z	TIPE
40	104.85	63	30.2	4	1
40	117.55	63	30.2	4	2
40	130.25	63	30.2	4	3

# DRIVEN TOOLING SYSTEM

## DRIVEN 工具系统

DIN1809 DA DRIVEN HEAD.....	L.06
轴向钻铣动力刀座	
DIN1809 DR DRIVEN HEAD.....	L.07
径向钻铣动力刀座	
DIN1809 DA DRIVEN HEAD .....	L.08
轴向钻铣动力刀座	
DIN1809 DR DRIVEN HEAD .....	L.08
径向钻铣动力刀座	
DIN1809 DOA DRIVEN HEAD.....	L.09
轴向偏心钻铣动力刀座	
DIN1809 DOR DRIVEN HEAD.....	L.09
径向偏心钻铣动力刀座	
DIN5480 DA DRIVEN HEAD.....	L.10
轴向钻铣动力刀座	
DIN5480 DR DRIVEN HEAD.....	L.10
径向钻铣动力刀座 .....	L.10
DIN5480 DOA DRIVEN HEAD.....	L.11
轴向偏心钻铣动力刀座	
DIN5480 DOR DRIVEN HEAD .....	L.11
径向偏心钻铣动力刀座	
DIN5482 DA DRIVEN HEAD.....	L.12
轴向钻铣动力刀座	
DIN5482 DR DRIVEN HEAD .....	L.12
径向钻铣动力刀座	
DIN5482 DOA DRIVEN HEAD .....	L.13
轴向偏心钻铣动力刀座	
DIN5482 DOR DRIVEN HEAD .....	L.13
径向偏心钻铣动力刀座	
TOEM BARUFFALDI DA DRIVEN HEAD.....	L.14
轴向钻铣动力刀座	
TOEM BARUFFALDI DA DRIVEN HEAD.....	L.14
径向钻铣动力刀座	
TOEM BARUFFALDI DA DRIVEN HEAD.....	L.15
轴向偏心钻铣动力刀座	
DTOEM BARUFFALDI DA DRIVEN HEAD.....	L.15
径向偏心钻铣动力刀座	
STEPPED HAASDA DRIVEN HEAD.....	L.16
轴向钻铣动力刀座	
STEPPED HAASDA DRIVEN HEAD.....	L.17
径向钻铣动力刀座	
STEPPED HAAS DOA DRIVEN HEAD.....	L.18
轴向偏心钻铣动力刀座	
STEPPED HAAS DOR DRIVEN HEAD.....	L.18
径向偏心钻铣动力刀座	

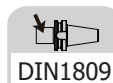


DRIVEN

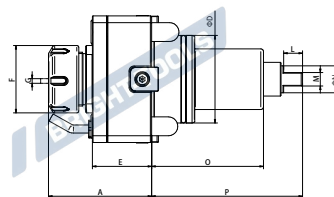
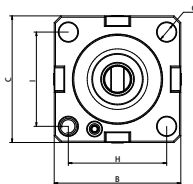


## BMT Axial Driven Head, DIN 1809

### 轴向钻铣动力刀座



RPM  
6000



Size	A	B	C	D	E	F	G	H	I	L	M	N	O	P	Q
BMT45-DAER25-H078 DIN1809	78	75	75	45	46.5	42	ER25	58	58	8.5	6	14	60	84	M8
BMT55-DAER25-H080 DIN1809	80	85	85	55	49	42	ER25	64	64	11	8	20	75	104	M10
BMT65-DAER32-H081 DIN1809	81	94	94	65	44	50	ER32	73	70	14	10	20	83	112	M12
BMT45-DAER25-H083 DIN1809	83	75	85	45	40.5	42	ER25	58	58	8.5	6	20	58	83	M8
BMT55-DAER32-H086 DIN1809	86	85	97	55	41.2	50	ER32	64	64	9.7	8	23.5	73	102	M10
BMT75-DAER40-78 DIN1809	78	112	112	75	30	63	ER40	90	90	15	14	23	80	110	M12
BMT85-DAER50-108 DIN1809	108	125	125	85	44	78	ER50	100	100	20	16	27.5	96	136	M12

BRIGHT-TOOLS

BRIGHT-TOOLS

BRIGHT-TOOLS

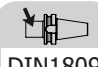
BRIGHT-TOOLS

BRIGHT-TOOLS

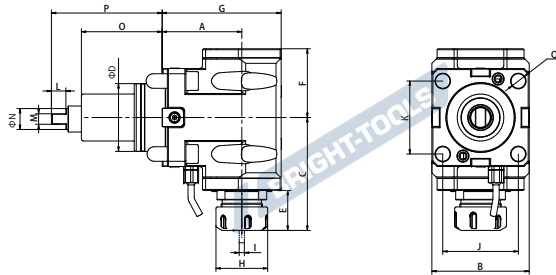
BRIGHT-TOOLS

# BMT Radial Driven Head, DIN 1809

## 径向钻铣动力刀座


DIN1809

RPM
4000

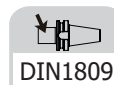


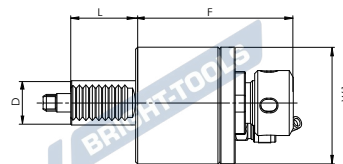
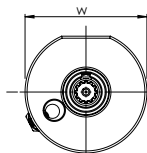
Size	A	B	C	D	E	F	G	H	I	J	K	L	M	N	O	P	Q
BMT45-DRER25-65 DIN1809	65	75	93	45	32	50	99	42	ER25	58	58	8.5	6	14	M8	84	M8
BMT45-DRER25-60 DIN1809	60	75	100.5	45	31	54.7	94	42	ER25	58	58	8	6	20	M8	83	M8
BMT55-DRER25-60 DIN1809	60	85	105	55	31	56.7	97	42	ER25	64	64	11	8	20	M10	104	M10
BMT55E-DRER25-70 DIN1809	70	85	97	55	31	64.2	108	42	ER25	64	64	11	8	20	M10	104	M10
BMT55-DRER25-85 DIN1809	85	85	97	55	31	64.2	123	42	ER25	64	64	11	8	20	M10	104	M10
BMT55-DRER32-60 DIN1809	60	85	107	55	34	57	97	50	ER32	64	64	9.7	8	23.5	M10	102	M10
BMT65E-DRER32-72 DIN1809	72	94	113	65	43	66	110	50	ER32	73	70	14	10	20	M12	112	M12
BMT65-DRER32-100 DIN1809	100	94	113	65	43	66	138	50	ER32	73	70	14	10	20	M12	112	M12
BMT75-DRER40-60 DIN1809	60	112	104	75	41	65	105	63	ER40	90	90	15	14	23	M12	110	M12
BMT75-DRER40-90 DIN1809	90	112	104	75	41	65	135	63	ER40	90	90	15	14	23	M12	110	M12
BMT75-DRER40-125 DIN1809	125	112	104	75	41	65	170	63	ER40	90	90	15	14	23	M12	110	M12
BMT85-DRER40-110 DIN1809	110	125	134.8	85	54.3	75.5	160	78	ER50	100	100	20	16	27.5	M12	136	M12



## VDI Axial Driven Head, DIN 1809

### 轴向钻铣动力刀座

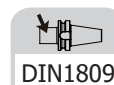

 RPM  
6000

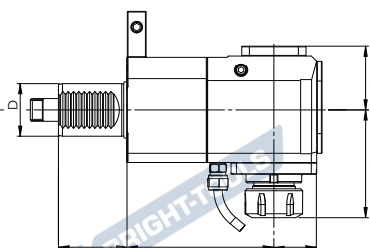
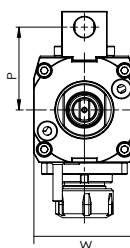
 I (rev.)  
1:1


Size	VDI	Collet	F	L	W	W1	Nm	Internal Cooling
VDI30-DAER25-87 DIN1809	30	ER25	87	45	64	68	28	no
VDI30-DAER25K-87 DIN1809	30	ER25	87	45	64	68	28	yes
VDI40-DAER25-105 DIN1809	40	ER25	105	53	80	86	50	no
VDI40-DAER25K-105 DIN1809	40	ER25	105	53	80	86	50	yes
VDI40-DAER32-108 DIN1809	40	ER32	108	53	80	86	50	no
VDI40-DAER32K-108 DIN1809	40	ER32	108	53	80	86	50	yes
VDI40-DAER32-95 DIN1809	40	ER32	95	53	80	86	50	no
VDI40-DAER32K-95 DIN1809	40	ER32	95	53	80	86	50	yes

## VDI Radial Driven Head, DIN 1809

### 径向钻铣动力刀座

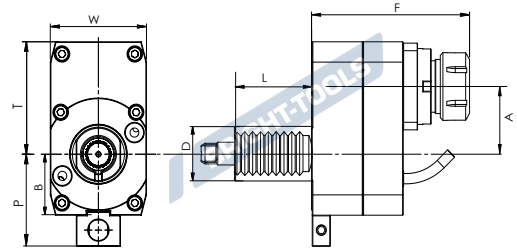

 RPM  
6000

 I (rev.)  
1:1


Size	VDI	Collet	A	B	F	L	P	T	W	Nm	Internal Cooling	Direction
VDI30-DRER25-55 DIN1809	30	ER25	55	48	63	45	48	29	64	28	no	right
VDI30-DRER25K-55 DIN1809	30	ER25	55	51	63	45	48	29	64	28	yes	right
VDI40-DRER25-80 DIN1809	40	ER25	80	59	70	53	71	36	75	50	no	right
VDI40-DRER25K-80 DIN1809	40	ER25	80	62	70	53	71	36	75	50	yes	right
VDI40-DRER32-80 DIN1809	40	ER32	80	59	74	53	71	36	75	50	no	right
VDI40-DRER32K-80 DIN1809	40	ER32	80	62	74	53	71	36	75	50	yes	right
VDI40-DRER25-100 DIN1809	40	ER25	100	59	70	53	-	36	75	50	no	left
VDI40-DRER25K-100 DIN1809	40	ER25	100	62	70	53	-	36	75	50	yes	left
VDI40-DRER32-100 DIN1809	40	ER32	100	59	74	53	-	36	75	50	no	left
VDI40-DRER32K-100 DIN1809	40	ER32	100	62	74	53	-	36	75	50	yes	left

## VDI Axial Driven Head, Offset, DIN 1809 轴向偏心钻铣动力刀座

	RPM	I (rev.)
DIN1809	12000	1:2

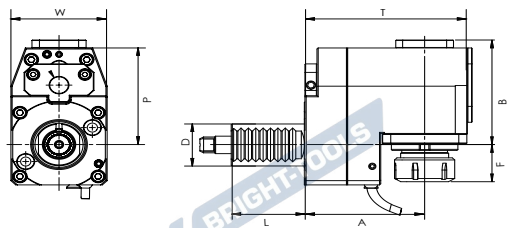


Size	VDI	Collet	A	B	F	L	P	T	W	Nm	Cooling
VDI30-DOAER25-50-106 DIN1809	30	ER25	50	40	106	45	48	90	78	14	EXT



## VDI Radial Driven Head, Offset, DIN 1809 径向偏心钻铣动力刀座

	I (rev.)
DIN1809	1:1



Size	VDI	Collet	A	B	F	L	P	T	W	Nm	RPM	Cooling
VDI30-DORER25-75-40 DIN1809	30	ER25	75	71	40	45	48	101	64	28	6000	no
VDI30-DORER25K-75-40 DIN1809	30	ER25	75	74	40	45	48	101	64	28	6000	yes
VDI40-DORER25-120-37 DIN1809	40	ER25	120	92	37	53	71	120	75	60	4000	no
VDI40-DORER25K-120-37 DIN1809	40	ER25	120	95	37	53	71	120	75	60	4000	yes
VDI40-DORER32-120-41 DIN1809	40	ER32	120	92	41	53	71	120	75	60	4000	no
VDI40-DORER32K-120-41 DIN1809	40	ER32	120	95	41	53	71	120	75	60	4000	yes

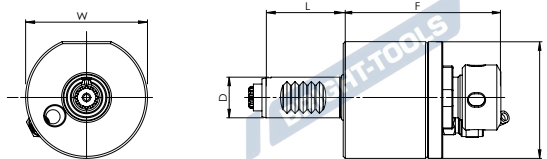


**DRIVEN**

## VDI Axial Driven Head, DIN 5480

### 轴向钻铣动力刀座

DIN5480	RPM 6000	I (rev.) 1:1
---------	-------------	-----------------

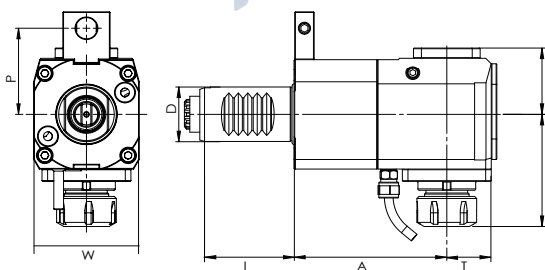


Size	VDI	Collet	F	L	W	W1	Nm	Internal Cooling
VDI30-DAER25-87 DIN5480	30	ER25	87	55	62	69	28	no
VDI30-DAER25K-87 DIN5480	30	ER25	87	55	62	69	28	yes
VDI40-DAER25-105 DIN5480	40	ER25	105	63	76	94	50	no
VDI40-DAER25K-105 DIN5480	40	ER25	105	63	76	94	50	yes
VDI40-DAER32-108 DIN5480	40	ER32	108	63	76	94	50	no
VDI40-DAER32K-108 DIN5480	40	ER32	108	63	76	94	50	yes

## VDI Radial Driven Head, DIN 5480

### 径向钻铣动力刀座

DIN5480	RPM 6000	I (rev.) 1:1
---------	-------------	-----------------

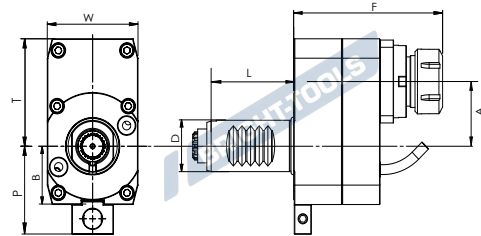


Size	VDI	Collet	A	B	F	L	P	T	W	Nm	Internal Cooling	Direction
VDI30-DRER25-55 DIN5480	30	ER25	55	48	63	55	56	26	64	28	no	right
VDI30-DRER25K-55 DIN5480	30	ER25	55	51	63	55	56	26	64	28	yes	right
VDI30-DRER25-85 DIN5480	30	ER25	85	48	63	55	56	26	64	28	no	right
VDI30-DRER25K-85 DIN5480	30	ER25	85	51	63	55	56	26	64	28	yes	right
VDI30-DRER25-100 DIN5480	30	ER25	100	48	63	55	56	29	64	28	no	right
VDI30-DRER25K-100 DIN5480	30	ER25	100	51	63	55	56	29	64	28	yes	right
VDI40-DRER25-80 DIN5480	40	ER25	80	59	70	63	65	33	75	50	no	right
VDI40-DRER25K-80 DIN5480	40	ER25	80	62	70	63	65	33	75	50	yes	right
VDI40-DRER25-100 DIN5480	40	ER25	100	59	70	63	65	33	75	50	no	right
VDI40-DRER25K-100 DIN5480	40	ER25	100	62	70	63	65	33	75	50	yes	right
VDI40-DRER32-80 DIN5480	40	ER32	80	59	74	63	65	33	75	50	no	right
VDI40-DRER32K-80 DIN5480	40	ER32	80	62	74	63	65	33	75	50	yes	right
VDI40-DRER32-100 DIN5480	40	ER32	100	59	74	63	65	33	75	50	no	right
VDI40-DRER32K-100 DIN5480	40	ER32	100	62	74	63	65	33	75	50	yes	right

## VDI Axial Driven Head, Offset, DIN 5480

### 轴向偏心钻铣动力刀座

	RPM	I (rev.)
DIN5480	12000	1:2

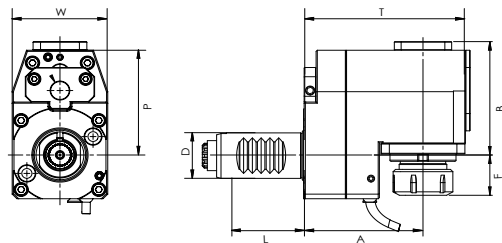


Size	VDI	Collet	A	B	F	L	P	T	W	Nm	Cooling
VDI30-DOAER25-50-102 DIN5480	30	ER25	50	47	102	55	56	90	78	14	EXT

## VDI Radial Driven Head, Offset, DIN 5480

### 径向偏心钻铣动力刀座

	RPM	I (rev.)
DIN5480	6000	1:1



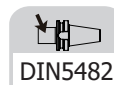
Size	VDI	Collet	A	B	F	L	P	T	W	Nm	Cooling
VDI30-DORER25-75-39.8 DIN5480	30	ER25	75	71	39.8	55	56	101	64	28	EXT
VDI30-DORER25K-75-39.8 DIN5480	30	ER25	75	73.5	39.8	55	56	101	64	28	EXT+INT
VDI40-DORER25-120-36.6 DIN5480	40	ER25	120	92.2	36.6	63	65	153	75	50	EXT
VDI40-DORER25K-120-36.6 DIN5480	40	ER25	120	95.2	36.6	63	65	153	75	50	EXT+INT
VDI40-DORER32-120-40.6 DIN5480	40	ER32	120	92.2	40.6	63	65	153	75	50	EXT
VDI40-DORER32K-120-40.6 DIN5480	40	ER32	120	95.2	40.6	63	65	153	75	50	EXT+INT

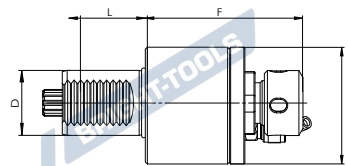
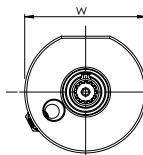
**DRIVEN**



## VDI Axial Driven Head, DIN 5482

### 轴向钻铣动力刀座


 RPM  
6000

 I (rev.)  
1:1


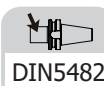
Size	VDI	Collet	F	L	W	W1	Nm	Internal Cooling
VDI30-DAER25-87 DIN5482	30	ER25	87	45	62	69	28	no
VDI30-DAER25K-87 DIN5482	30	ER25	87	45	62	69	28	yes
VDI40-DAER25-105 DIN5482	40	ER25	105	53	76	94	50	no
VDI40-DAER25K-105 DIN5482	40	ER25	105	53	76	94	50	yes
VDI40-DAER32-108 DIN5482	40	ER32	108	53	76	94	50	no
VDI40-DAER32K-108 DIN5482	40	ER32	108	53	76	94	50	yes

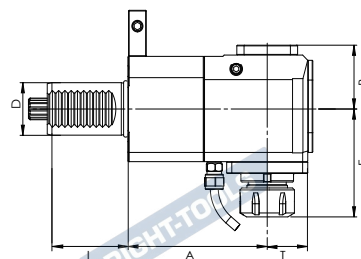
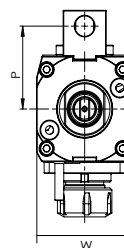
BRIGHT-TOOLS

BRIGHT-TOOLS

## VDI Radial Driven Head, DIN 5482

### 径向钻铣动力刀座


 RPM  
6000

 I (rev.)  
1:1


Size	VDI	Collet	A	B	F	L	P	T	W	Nm	Internal Cooling	Direction
VDI30-DRER25-55 DIN5482	30	ER25	55	48	63	45	48	26	64	28	no	right
VDI30-DRER25K-55 DIN5482	30	ER25	55	51	63	45	48	26	64	28	yes	right
VDI40-DRER25-80 DIN5482	40	ER25	80	59	70	53	71	33	75	50	no	right
VDI40-DRER25K-80 DIN5482	40	ER25	80	62	70	53	71	33	75	50	yes	right
VDI40-DRER32-80 DIN5482	40	ER32	80	59	74	53	71	33	75	50	no	right
VDI40-DRER32K-80 DIN5482	40	ER32	80	62	74	53	71	33	75	50	yes	right

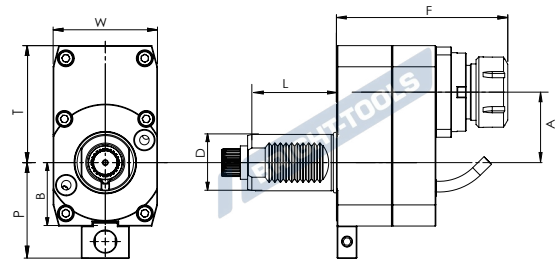
BRIGHT-TOOLS

BRIGHT-TOOLS

## VDI Axial Driven Head, Offset, DIN 5482

### 轴向偏心钻铣动力刀座

	RPM	I (rev.)
DIN5482	12000	1:2



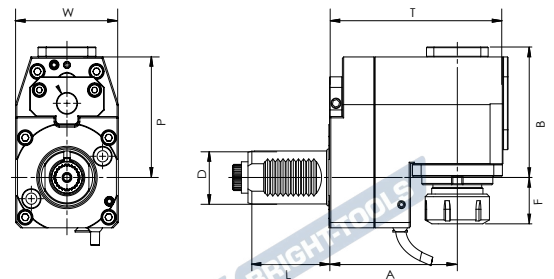
Size	VDI	Collet	A	B	F	L	P	T	W	Nm	Cooling
VDI30-DOAER25-50-102 DIN5482	30	ER25	50	40	102	45	48	90	78	14	EXT



## VDI Radial Driven Head, Offset, DIN 5482

### 径向偏心钻铣动力刀座

	I (rev.)
DIN 5482	1:1

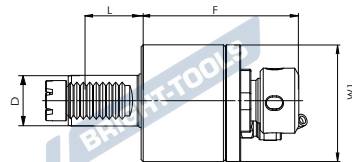
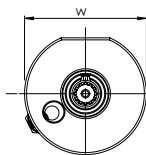


Size	VDI	Collet	A	B	F	L	P	T	W	Nm	RPM	Cooling
VDI30-DORER25-75-40 DIN5482	30	ER25	75	71	40	45	48	101	64	28	6000	no
VDI30-DORER25K-75-40 DIN5482	30	ER25	75	74	40	45	48	101	64	28	6000	yes
VDI40-DORER25-120-37 DIN5482	40	ER25	120	92	37	53	71	125.5	75	60	4000	no
VDI40-DORER25K-120-37 DIN5482	40	ER25	120	95	37	53	71	125.5	75	60	4000	yes
VDI40-DORER32-120-41 DIN5482	40	ER32	120	92	41	53	71	125.5	75	60	4000	no
VDI40-DORER32K-120-41 DIN5482	40	ER32	120	95	41	53	71	125.5	75	60	4000	yes



## VDI Axial Driven Head, TOEM 轴向钻铣动力刀座

**RPM**  
6000

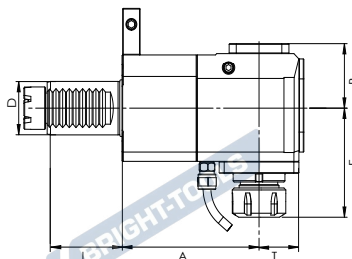
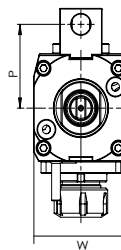
**I (rev.)**  
1:1


Size	VDI	Collet	F	L	W	W1	Nm	Internal Cooling	Z
VDI30-DAER25-87 TOEM	30	ER25	87	45	64	68	28	no	6
VDI30-DAER25K-87 TOEM	30	ER25	87	45	64	68	28	yes	6
VDI40-DAER25-105 TOEM	40	ER25	105	53	80	86	50	no	8
VDI40-DAER25K-105 TOEM	40	ER25	105	53	80	86	50	yes	8
VDI40-DAER32-108 TOEM	40	ER32	108	53	80	86	50	no	8
VDI40-DAER32K-108 TOEM	40	ER32	108	53	80	86	50	yes	8

**BRIGHT-TOOLS**
**BRIGHT-TOOLS**

## VDI Radial Driven Head, TOEM 径向钻铣动力刀座

**RPM**  
6000

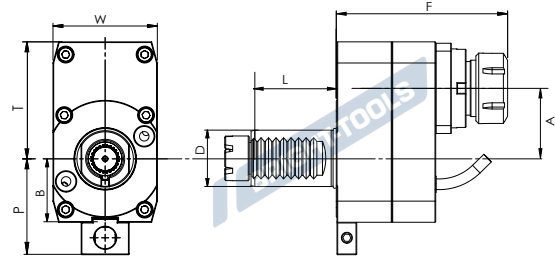
**I (rev.)**  
1:1


Size	VDI	Collet	A	B	F	L	P	T	W	Nm	Internal Cooling	Direction	Z
VDI30-DRER25-55 TOEM	30	ER25	55	48	63	45	48	29	64	28	no	right	6
VDI30-DRER25K-55 TOEM	30	ER25	55	51	63	45	48	29	64	28	yes	right	6
VDI40-DRER25-80 TOEM	40	ER25	80	59	70	53	71	36	75	50	no	right	8
VDI40-DRER25K-80 TOEM	40	ER25	80	62	70	53	71	36	75	50	yes	right	8
VDI40-DRER32-80 TOEM	40	ER32	80	59	74	53	71	36	75	50	no	right	8
VDI40-DRER32K-80 TOEM	40	ER32	80	62	74	53	71	36	75	50	yes	right	8

**BRIGHT-TOOLS**
**BRIGHT-TOOLS**

## VDI Axial Driven Head, Offset, TOEM 轴向偏心钻铣动力刀座

	RPM	I (rev.)
TOEM BARUFFALDI	12000	1:2

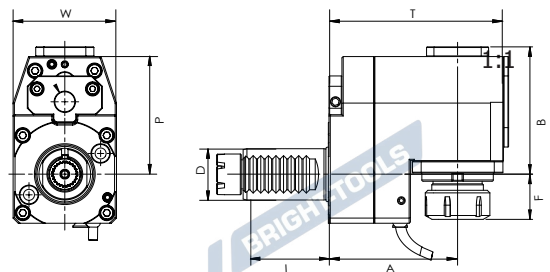


Size	VDI	Collet	A	B	F	L	P	T	W	Nm	Cooling	Z
VDI30-DOAER25-50-106 TOEM	30	ER25	50	40	106	45	48	90	78	14	EXT	6



## VDI Radial Driven Head, Offset, TOEM 径向偏心钻铣动力刀座

	RPM	I (rev.)
TOEM BARUFFALDI	6000	1:1



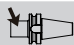
Size	VDI	Collet	A	B	F	L	P	T	W	Nm	Cooling	Z
VDI30-DORER25-75-40 TOEM	30	ER25	75	71	40	45	48	101	64	28	no	6
VDI30-DORER25K-75-40 TOEM	30	ER25	75	74	40	45	48	101	64	28	yes	6
VDI40-DORER25-120-37 TOEM	40	ER25	120	92	37	53	71	120	75	60	no	-
VDI40-DORER25K-120-37 TOEM	40	ER25	120	95	37	53	71	120	75	60	yes	-
VDI40-DORER32-120-41 TOEM	40	ER32	120	92	41	53	71	120	75	60	no	-
VDI40-DORER32K-120-41 TOEM	40	ER32	120	95	41	53	71	120	75	60	yes	-



**DRIVEN**

## VDI Axial Driven Head, STEPPED HAAS

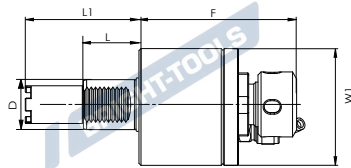
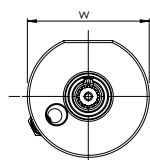
### 轴向钻铣动力刀座



STEPPED HAAS


RPM  
6000

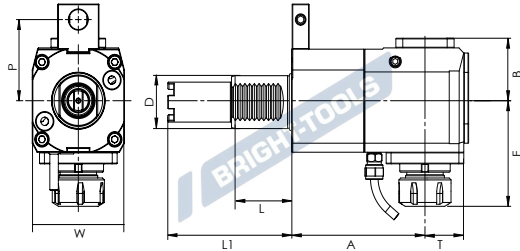
I (rev.)  
1:1



Size	VDI	Collet	F	L	L1	W	W1	Nm	Internal Cooling
VDI40-DAER25-105 HAAS	40	ER25	105	63	104.85	76	94	50	no
VDI40-DAER25K-105 HAAS	40	ER25	105	63	104.85	76	94	50	yes
VDI40-DAER32-108 HAAS	40	ER32	108	63	104.85	76	94	50	no
VDI40-DAER32K-108 HAAS	40	ER32	108	63	104.85	76	94	50	yes
VDI40-DAER25-105L HAAS	40	ER25	105	63	117.55	76	94	50	no
VDI40-DAER25K-105L HAAS	40	ER25	105	63	117.55	76	94	50	yes
VDI40-DAER32-108L HAAS	40	ER32	108	63	117.55	76	94	50	no
VDI40-DAER32K-108L HAAS	40	ER32	108	63	117.55	76	94	50	yes
VDI40-DAER25-105EL HAAS	40	ER25	105	63	130.25	76	94	50	no
VDI40-DAER25K-105EL HAAS	40	ER25	105	63	130.25	76	94	50	yes
VDI40-DAER32-108EL HAAS	40	ER32	108	63	130.25	76	94	50	no
VDI40-DAER32K-108EL HAAS	40	ER32	108	63	130.25	76	94	50	yes

## VDI Radial Driven Head, STEPPED HAAS 径向钻铣动力刀座

 STEPPED HAAS	RPM 6000	I (rev.) 1:1
---	-------------	-----------------



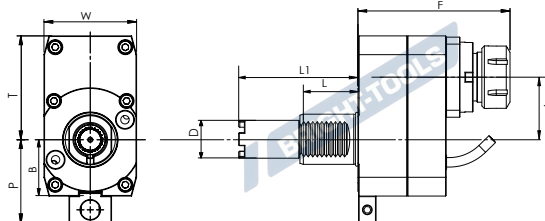
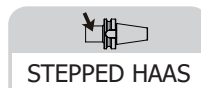
Size	VDI	Collet	A	B	F	L	L1	P	T	W	Nm	Internal Cooling	Direction
VDI40-DRER25-69 HAAS	40	ER25	69	59	70	63	104.85	82	36	75	60	no	left
VDI40-DRER25K-69 HAAS	40	ER25	69	62	70	63	104.85	82	36	75	50	yes	left
VDI40-DRER32-69 HAAS	40	ER32	69	59	74	63	104.85	82	36	75	50	no	left
VDI40-DRER32K-69 HAAS	40	ER32	69	62	74	63	104.85	82	36	75	50	yes	left
VDI40-DRER25-69L HAAS	40	ER25	69	59	70	63	117.55	82	36	75	50	no	left
VDI40-DRER25K-69L HAAS	40	ER25	69	62	70	63	117.55	82	36	75	50	yes	left
VDI40-DRER32-69L HAAS	40	ER32	69	59	74	63	117.55	82	36	75	50	no	left
VDI40-DRER32K-69L HAAS	40	ER32	69	62	74	63	117.55	82	36	75	50	yes	left
VDI40-DRER25-69EL HAAS	40	ER32	69	59	70	63	130.25	82	36	75	50	no	left
VDI40-DRER25K-69EL HAAS	40	ER25	69	62	70	63	130.25	82	36	75	50	yes	left
VDI40-DRER32-69EL HAAS	40	ER25	69	59	74	63	130.25	82	36	75	50	no	left
VDI40-DRER32K-69EL HAAS	40	ER32	69	62	74	63	130.25	82	36	75	50	yes	left
VDI40-DRER25-80 HAAS	40	ER25	80	59	70	63	104.85	82	33	75	50	no	left
VDI40-DRER25K-80 HAAS	40	ER25	80	62	70	63	104.85	82	33	75	50	yes	left
VDI40-DRER32-80 HAAS	40	ER32	80	59	74	63	104.85	82	33	75	50	no	left
VDI40-DRER32K-80 HAAS	40	ER32	80	62	74	63	104.85	82	33	75	50	yes	left
VDI40-DRER25-80L HAAS	40	ER25	80	59	70	63	117.55	82	33	75	50	no	left
VDI40-DRER25K-80L HAAS	40	ER25	80	62	70	63	117.55	82	33	75	50	yes	left
VDI40-DRER32-80L HAAS	40	ER32	80	59	74	63	117.55	82	33	75	50	no	left
VDI40-DRER32K-80L HAAS	40	ER32	80	62	74	63	117.55	82	33	75	50	yes	left
VDI40-DRER25-80EL HAAS	40	ER25	80	59	70	63	130.25	82	33	75	50	no	left
VDI40-DRER25K-80EL HAAS	40	ER25	80	62	70	63	130.25	82	33	75	50	yes	left
VDI40-DRER32-80EL HAAS	40	ER32	80	59	74	63	130.25	82	33	75	50	no	left
VDI40-DRER32K-80EL HAAS	40	ER32	80	62	74	63	130.25	82	33	75	50	yes	left

**DRIVEN**



## VDI Axial Driven Head, Offset, STEPPED HAAS

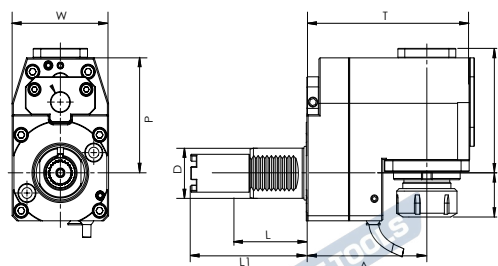
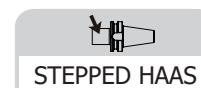
### 轴向偏心钻铣动力刀座



Size	VDI	Collet	A	F	L	L1	P	T	W	Cooling	Direction
VDI40-DOAER25-50-63 HAAS	40	ER25	50	106	63	140.85	82	90	78	no	left
VDI40-DOAER25K-50-63 HAAS	40	ER25	50	106	63	140.85	82	90	78	yes	left
VDI40-DOAER25-50-63L HAAS	40	ER25	50	106	63	117.55	82	90	78	no	left
VDI40-DOAER25K-50-63L HAAS	40	ER25	50	106	63	117.55	82	90	78	yes	left
VDI40-DOAER25-50-63EL HAAS	40	ER25	50	106	63	130.25	82	90	78	no	left
VDI40-DOAER25K-50-63EL HAAS	40	ER25	50	106	63	130.25	82	90	78	yes	left

## VDI Radial Driven Head, Offset, STEPPED HAAS

### 径向偏心钻铣动力刀座



Size	VDI	Collet	A	B	F	L	L1	P	T	W	Cooling	Direction
VDI40-DORER25-120-37 HAAS	40	ER25	120	92	37	63	104.85	82	33	75	no	left
VDI40-DORER25K-120-37 HAAS	40	ER25	120	95	37	63	104.85	82	33	75	yes	left
VDI40-DORER32-120-37 HAAS	40	ER32	120	92	41	63	104.85	82	33	75	no	left
VDI40-DORER32K-120-37 HAAS	40	ER32	120	95	41	63	104.85	82	33	75	yes	left
VDI40-DORER25-120-37L HAAS	40	ER25	120	92	37	63	117.55	82	33	75	no	left
VDI40-DORER25K-120-37L HAAS	40	ER25	120	95	37	63	117.55	82	33	75	yes	left
VDI40-DORER32-120-37L HAAS	40	ER32	120	92	41	63	117.55	82	33	75	no	left
VDI40-DORER32K-120-37L HAAS	40	ER32	120	95	41	63	117.55	82	33	75	yes	left
VDI40-DORER25-120-37EL HAAS	40	ER25	120	92	37	63	130.25	82	33	75	no	left
VDI40-DORER25K-120-37EL HAAS	40	ER25	120	95	37	63	130.25	82	33	75	yes	left
VDI40-DORER32-120-37EL HAAS	40	ER32	120	92	41	63	130.25	82	33	75	no	left
VDI40-DORER32K-120-37EL HAAS	40	ER32	120	95	41	63	130.25	82	33	75	yes	left